

Advance Concrete 7.1 SP3 List of improvements Content



www.graitec.com

TECHNOLOGY

Compatibility

- GTC exchange with Advance Design 2.1-SP1 and Revit Structure 4.
- Some problems on opening drawings after saving them as AutoCAD 2004 format have been solved.
- No more crash on load a .dxf with cut repartition.

Avoid proxy addition on all open drawings

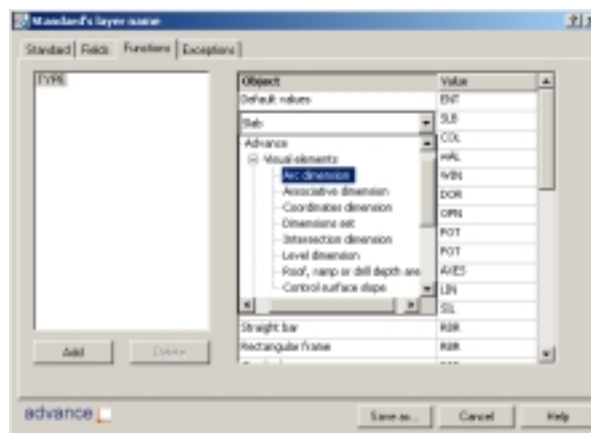
- An important improvement avoids useless saving of Advance Objects (custom objects, dictionaries, symbol table records...) in an AutoCAD drawings modified in Advance only by pure AutoCAD commands. Thus, on loading the saved drawings, no proxies are reported.

Xref behavior

- No more crash on xref update for wall and opening.

Dimensions in the Layer Naming Manager

- All Advance dimensions are now available in the objects list.



Improved layer standard saving

- The current standard is not overridden at new layer standard saving.

Edit ACIS objects

- A problem with the new AutoCAD 2007 feature for modification of the ACIS 3D solids pressing CTRL key and selecting an edge or a face has been solved.

Multicriteria selection

- A small problem causing a false syntax error in the multiple criteria selection tool for multiple levels selection has been solved.



Millimeters in exponents when REBAR feature is missing

→ The dimensions in millimeters can be displayed at exponent even when the REBAR license feature is missing.

Export tilted beams to Effel

→ Now it is possible to export tilted beams from Advance to Effel.

Export to Arche Structure

→ A problem causing model resize on export to Arche Structure has been solved.

Speed improvement

→ Improved speed for calculating views and activating layout.

MODEL

- “Model watch” is available and works now for all licenses types.
- In a specific drawing, a problem causing crash on trimming walls has been solved.
- No more crash on column selection in a specific drawing.
- Improved opening depth tolerance: the openings are now correctly displayed.
- Improved fitter fusions.

DRAWINGS

Elements display in drawings

- The lintels are displayed correctly in isometric views.
- A problem causing wrong elements edges display in a section for a specific drawing has been solved.
- Externally referenced foundation slabs are correctly displayed in the full height sections.

Slab opening symbol

- Slab openings created on the slab edges are now correctly represented in the top views.

Hatch by material in isometric views

- Hatch by material is correctly taken into account in isometric views.

Improved point by point dimension

- The rule “Display in cm if < 1m” applies now after stretching AutoCAD dimensions created by the *grtcdimension* command.
- Now, the dimensions created with the *grtcdimension* command are not grouped.

Cut symbol text style

- The symbol text style for cuts and elevations is taken into account in cuts and elevations.

Section display algorithm in horizontal plans reviewed

- The algorithm for the section lines display in horizontal plans (top/bottom views, plan views...) has been reviewed.

Dynamic blocks

- The dynamic symbols are not displayed in wall opening impact representation.

View update

- The layout viewports are now correctly updated after adding new views to a group.
- Updating a view of a group, activates now the entire group.

Layers

- No more extra layers attached to layouts by view grouping.
- Some layer visibility problems have been solved.
- Deleting a level doesn't crash the reinforcement drawing.
- No more crash on plan view export to dwg.

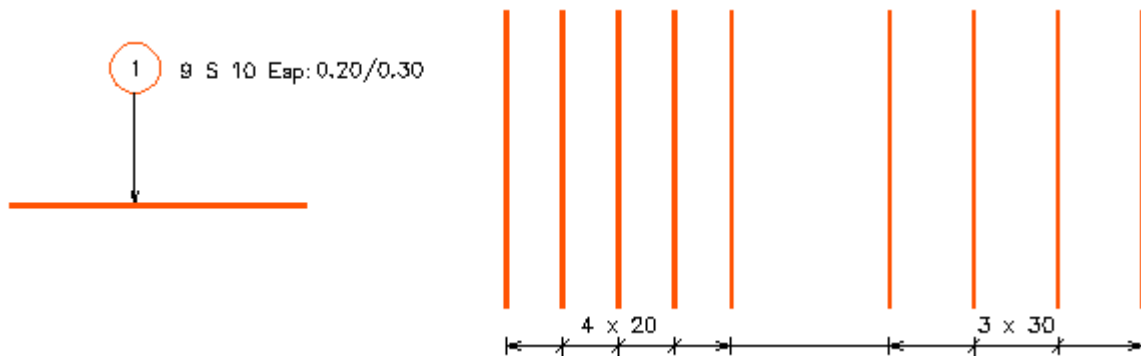
Improved plotting

- The repartition dimension line thickness is now correctly displayed in preview and in paper plan.
- The hatch thickness is now correct in print preview and in printed layout.

REINFORCEMENT DRAWINGS

Improved bar symbol

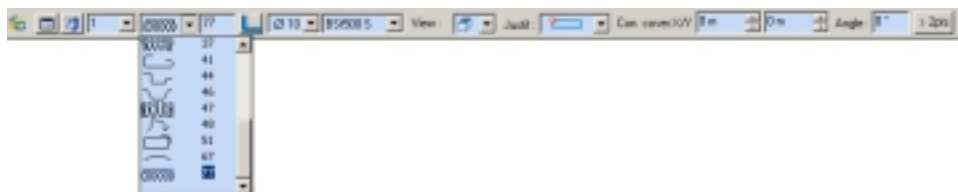
→ For several repartitions on the same bar, with different bar spacing, the symbol displays now all the distances, separated by '/'.
 → The symbols with <ElementDistance> for a bar with two point repartitions work fine now.



→ The symbol anchorage controls do not disappear from the smartbar.

New ISO shape code

→ New spiral shape code is added to the German standard.

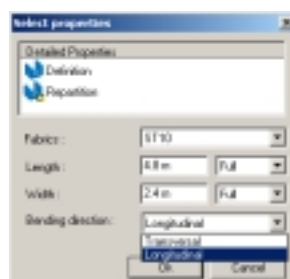


Bar segments length

→ The bar segments length are displayed always in the properties dialog.

Mesh row bending direction in the quick properties

→ The fabric bending direction can be modified now from the quick properties dialog.



Fabrics library

→ New fabric types can be added to the libraries according to the current standard.

Fabric row creation

→ The modification made at creation time are stored now as default values.

Fabric trimming according to UCS

→ When trimming fabrics distributed according to UCS, the selected side is always kept.

Cut repartition

→ No more crash on creating more than 8 dimensions on the same cut repartition without “Repartition length in linear meters”

Bar repartitions along an arc

→ A small problem in the simplified representation of a linear repartition along an arc has been solved.

Improved repartitions behavior

→ A small problem causing disappearing repartition on modifying the definition bar has been solved.

→ An error appeared on changing the definition bar of a repartition has been solved.

→ The repartitions behavior on modification by grip points is correct now.

Bending detail

→ Small correction of bending detail display in the repartition dimension.

→ Automatic bending detail saves the settings.

List REO-WATCH sensibility

→ The bars involved in REO-WATCH errors are now evaluated in lists.

List – Average diameter

→ The average diameter is now correctly calculated in the French bar list template.

List – Correct bending detail fillet diameter

→ The bending detail fillet diameter is displayed correctly in the list.

List – Multiplication factor taken into account

→ The multiplication factor is now taken into account at total length and total weight calculation when the option “Display sub-entities” is checked.

→ No more crash on saving the bar list.

→ Bars with the same position number are correctly taken into account in lists.

DOCUMENTS

Improved export to DWG

- The views of a group are correctly exported to .dwg.
- All layers attached to a layout are exported to .dwg.

Lists – Condition evaluation improvement

- The condition is evaluated now regardless the text formatting.
- The concrete volume is now correctly calculated in lists.

Others

- At dragging a drawing on a layout, the detail box has always the right size.
- No more crash on plotting layouts.
- No more crash on accessing viewport properties.
- The layers attached to a drawing are not visible in the layout.