

Advance - Concrete suite 6.1 SP3 Content



www.graitec.com

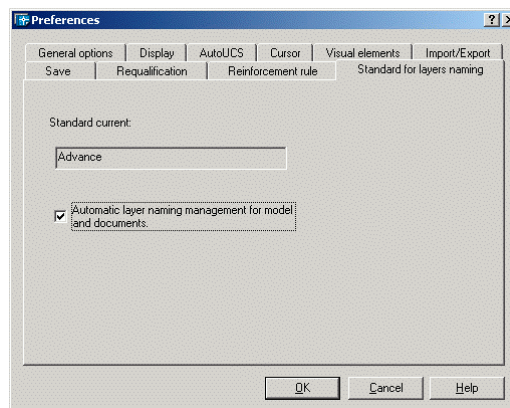
TECHNOLOGY

File size

→ The file size is reduced by 50% in SP3 to about the same size as in Advance 5.2. The used memory to open the file is also significantly reduced.

Option to disable the layer naming manager

→ The option to disable or enable the layer-naming manager has been added in the « Preferences » dialog.



Roof & Ramp in AutoCAD

→ Roof & Ramp are now displayed while opening drawings in pure AutoCAD without Advance.

License – Avoid checking all available license features

→ It is possible now to run Advance Concrete Modeling and Advance Concrete Reinforcement independent from each other, with a network license.

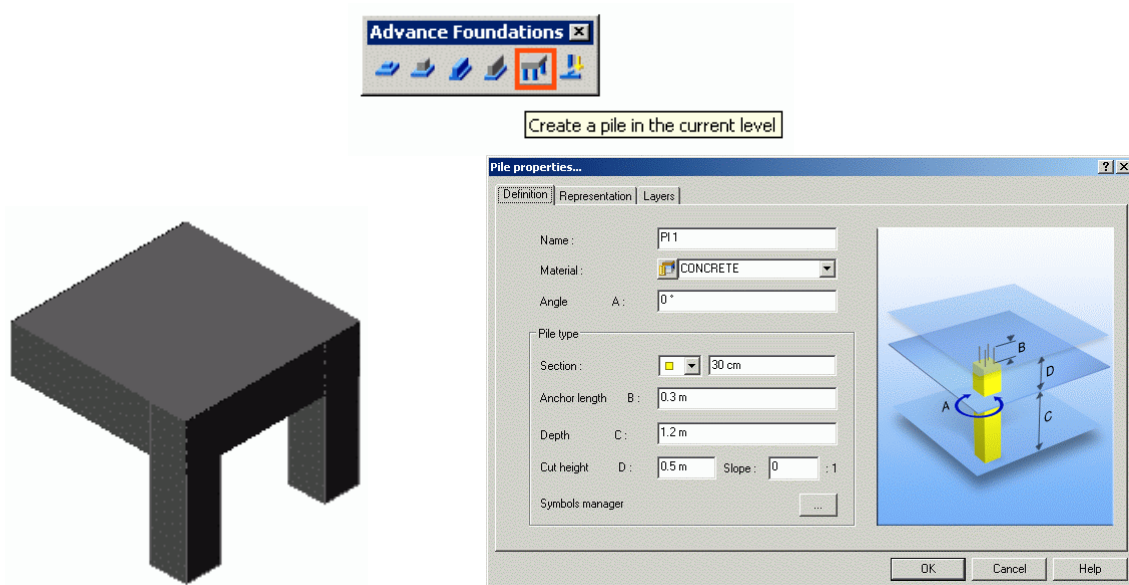
License – Transferring files between license types

A file created without any reinforcement on a full license package can be opened correctly on a license containing only modeling + formwork feature.

MODEL

Pile – new foundations objects

→ Pile can be created below isolated and continuous footings.



Beveled wall top

→ Beveled wall tops are working when the wall is curved at 180° degrees

User section

→ No more error message in the geometry manager after selecting to modify a user section

Mirror isolated footings

→ Mirror isolated footings works correctly after using the justification control

Level altitude in level name

→ Level names are correctly updated when changing the altitude

Copy level top

→ Copy level top now copies the plan view visual elements

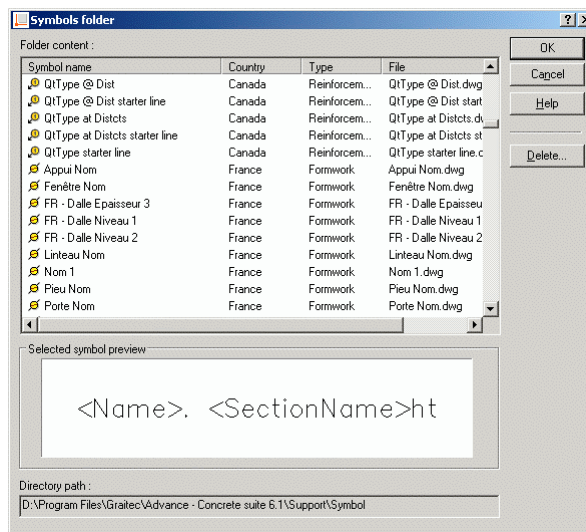
DRAWINGS

View calculation – Speed improvement

→ The view calculation time is significantly reduced for the horizontal and reinforcement views.

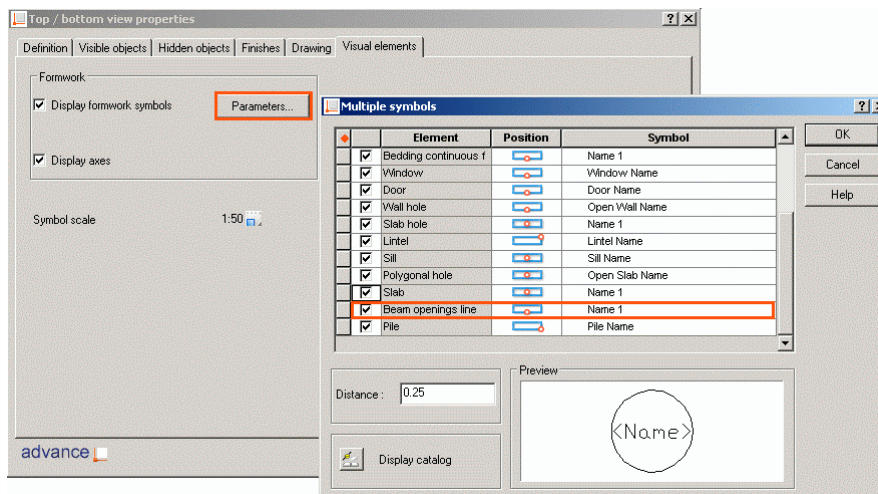
Symbol

→ The Country column has been added in the symbol catalog. The symbols are now divided according to the Country.



Beam opening symbol

→ Beam opening symbol has been added.



Symbol display

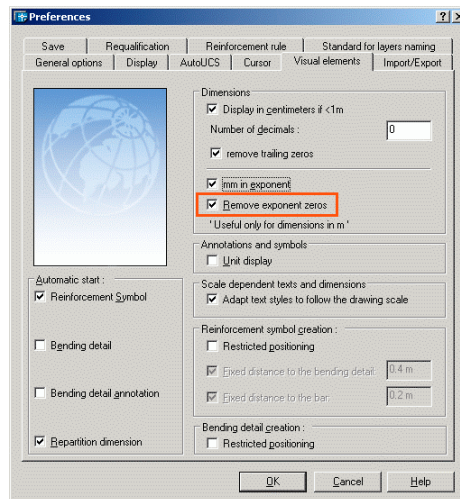
→ Symbols appear in documents with the correct size.

Annotation display

→ After mirroring wall and annotation twice the annotation text is displayed correctly.

Dimension line – Remove null exponent

→ Especially for the French and German markets, this feature enables trailing zeros removal only from the mm decimals.



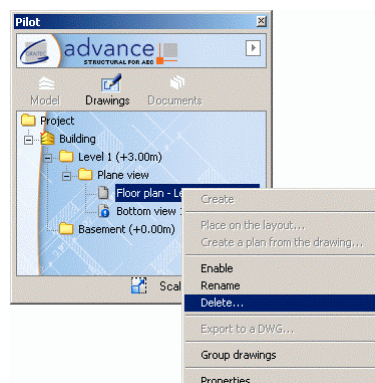
Dimensions

→ No more missing opening dimensions for sill and height in associative dimension.

→ The default settings for associative dimension when Germany is selected in the startup have been changed.

Views – Delete « Floor plans »

→ Floor plans can be deleted.



View groups containing cuts

→ View groups containing cuts (elevations) have a correct behavior after deleting the cut (elevation).

Views – Scale control

→ Scale control affects the grid.

Views update improvement

→ The visual elements do not disappear anymore on view update, after saving or opening the drawing.

Calculated views improvement

→ Several problems related to extra/missing lines in calculated views have been solved.

Bending details in lists

→ Bending details are correctly rotated in lists when the UCS is rotated

Reinforcement schedules

→ No more wrong reinforcement schedules of varying bars when using the Dutch repartition representation

→ Possibility to separate bent from straight bars in bar schedules.

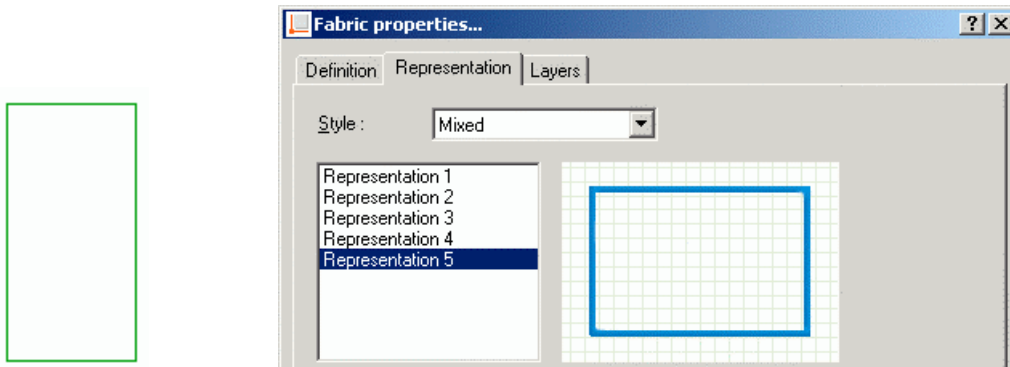
VISUAL ELEMENTS layer

→ The « Visual elements » layer, specific for calculated views, in 5.2 is now created automatically in 6.1 when the layer-naming manager is inactive.

REINFORCEMENT

Fabrics – New representation mode

→ Fabrics can be represented as simple rectangles, without diagonals, bubbles or annotations.



Fabrics – Fabric selection renumbering

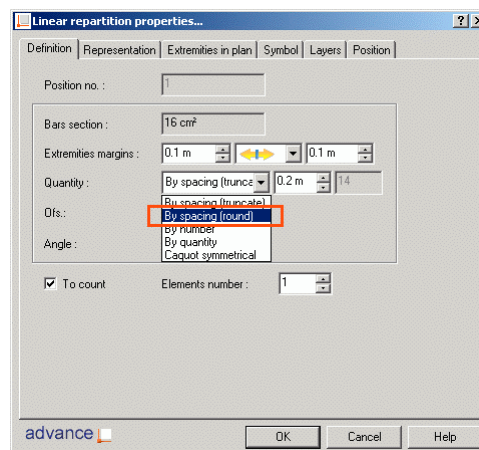
→ The renumbering of a fabric selection has been improved.

Fabric outline

→ Fabric outline takes into account the UCS angle.

Repartition – New distribution method

→ A new distribution method has been added. The new distribution method is available in the linear repartition, variable repartition, cut repartition, section repartition.



Copy repartition

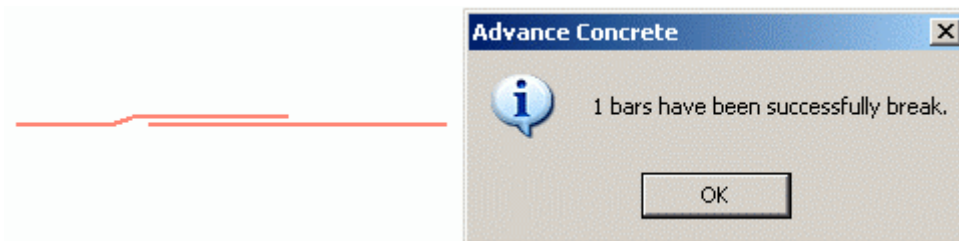
→ Possibility to copy circular repartition using Dutch representation.

Copy a cut repartitions

→ Speed improvement at copy/paste a cut repartition.

Bars – Display the number of modified bars

→ After breaking a bar, a message box displays the number of modified bars.

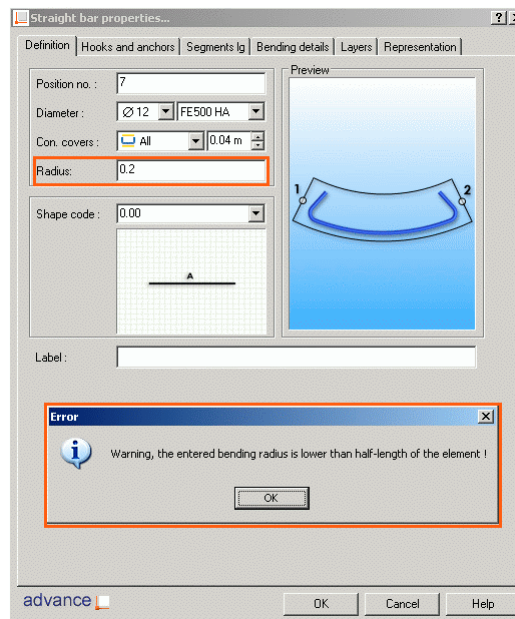


3D bars

→ Spiral shape 3D bars are created correctly with standard values.

Bars – Error message on wrong radius value

→ When the user inputs a wrong radius for the straight bar, an error message is displayed.

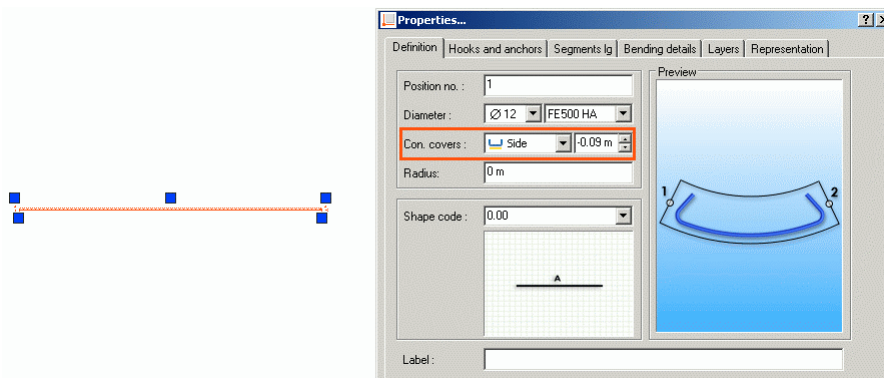


Bars – Mirror

→ Mirror works also on bars with shape code - French 5.26.

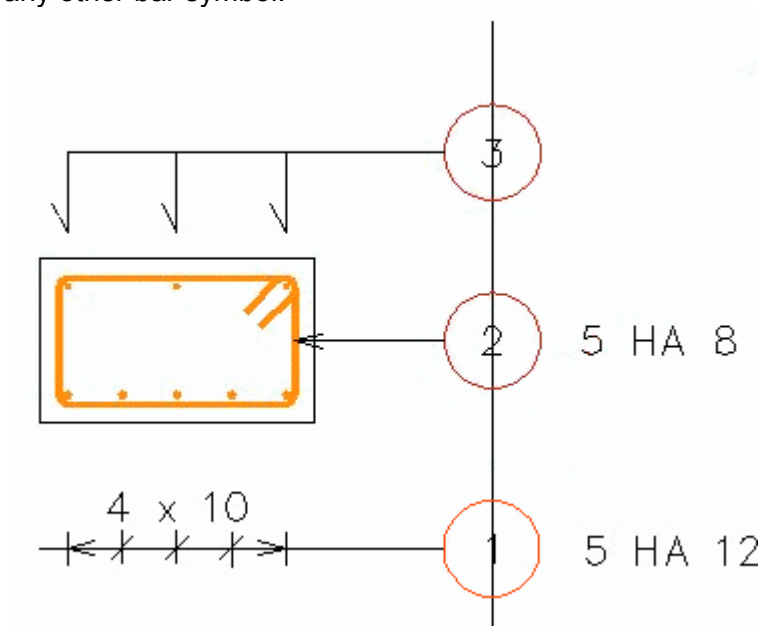
Bars – Negative concrete cover

→ Now it is possible to set a negative value for the concrete cover on a side of a straight bar.



Bar symbols – Align a bar symbol of a repartition dimension line

→ A bar symbol of a repartition dimension line can be automatically aligned to a reference line as any other bar symbol.





DOCUMENTS

Export to Excel

→ Lists can be exported to Excel using French regional settings (comma is used as decimal separator).