

Advance Concrete 7.1 SP4 List of improvements



www.graitec.com

TECHNOLOGY

Compatibility

→ Advance Concrete 7.1 SP4 is Windows Vista 32-bit compliant.

→ Advance Concrete 7.1 SP4 is AutoCAD® 2008 and AutoCAD® Architecture 2008 compliant.

OMD 15.1 compliance

→ Advance Concrete 7.1 SP4 is OMD 15.1 compliant.

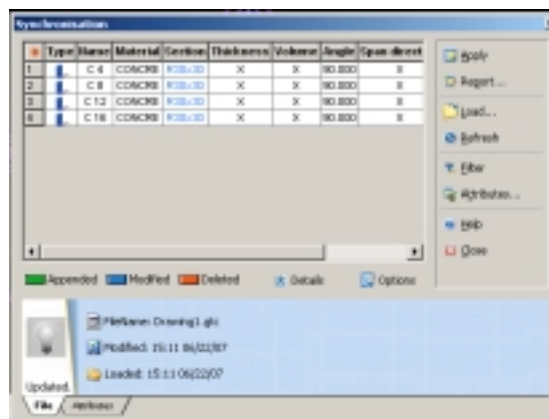
GTC - Improvements

→ A new toolbar for GTC export, import, and synchronization has been added.



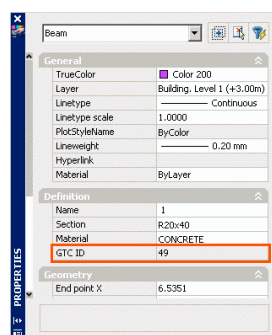
→ New shortcuts for GTC have been added to the application menu bar.

→ Improved GTC synchronization interface:



→ Improved GTC import/export functions.

→ The GTC ID is displayed in the AutoCAD® object properties window.



Arche Structure export correction

→ Corrected Arche Effel and Arche Structure export function when using "Recalculate elements axis" in the Preference dialog box.

Improved file saving

→ Corrected a problem causing loss of Advance Steel data on save after opening steel models with Advance Concrete.

→ "Recover" messages triggered by Xref insertions are no longer appearing.

→ Fixed the "command in progress" message that occasionally prevented saves.

→ Improved memory usage.

→ New drawing creation on the AutoCAD® – Czech version has been fixed.

Speed improvement

→ Improved file opening speed by 50%.

→ The drawings can be sent using the e-Transmit command.

Grid

→ The grid bubble text is always displayed in the middle of the bubble.

Drawings

Symbol display

→ Deleting a view in a group removes only the drafting associated with the deleted view.

Column hatch

→ Column hatches with user sections are correctly displayed.

Reinforcement drawings

Lists – Total weight display

→ The rebar list does not display ### for the total weight.

Symbol snap line display

→ The symbol snap line display controls are no longer disabled.

Reinforcement dimensions and labels

→ Rebar distribution dimensions and labels are no longer removed when assigned another bar definition.

→ The elements created on grouped drawings are placed correctly on the layers according to the selected standard.

Documents

Batch plotting

→ Blank drawings are no longer created by layout batch plot.

Hatch representation

→ Corrected hatch representation problems in Documents mode.

Other improvements

→ Improved Polish, Czech and German translations.