

Advance Concrete 8.1 SP1 Content



www.graitec.com

TECHNOLOGY

GTC Arche link

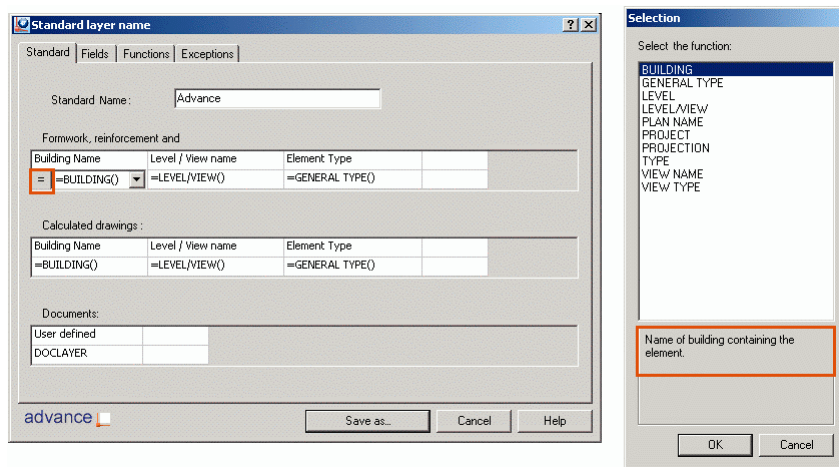
→ Arche import/export uses the GTC technology.

License borrowing

→ License borrowing is available.

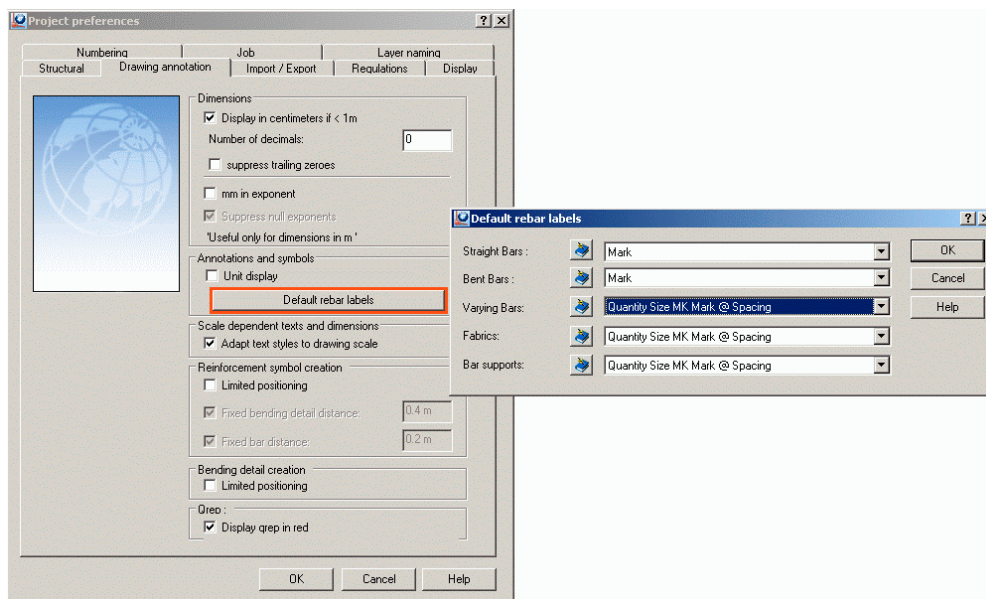
Layer naming manager – function and variable description

→ In the Layer naming manager, variables and functions have descriptions.



Automatic label type selection

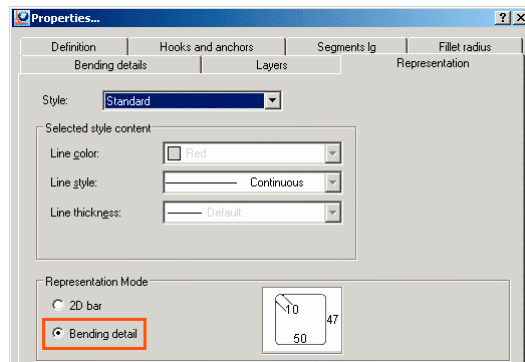
→ Reinforcement elements can be labeled automatically according to their type. The default symbol is selected in the Project preferences.



REINFORCEMENT

Bar definition – bending detail representation

→ A new option is available for representing bars as bending details. It is not necessary to create an extra bending detail as the dimensions and the segment texts are displayed on the bending form.

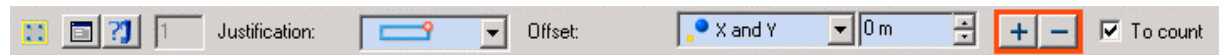


Bending detail scale

→ Bending detail scale changes during creation are saved for future creations.

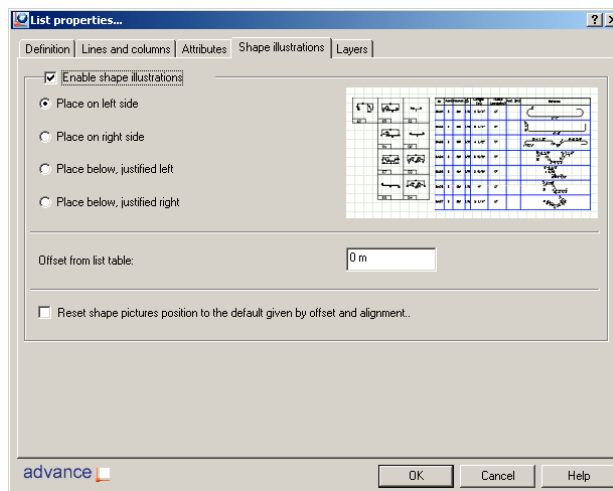
Free distributions – Buttons for adding and removing bars

→ Bars can be added or removed from a free distribution using the controls on the Smartbar.



List – Shape illustrations

→ The user has the option to add shape illustrations to bar lists (only for the aSa bar standard).

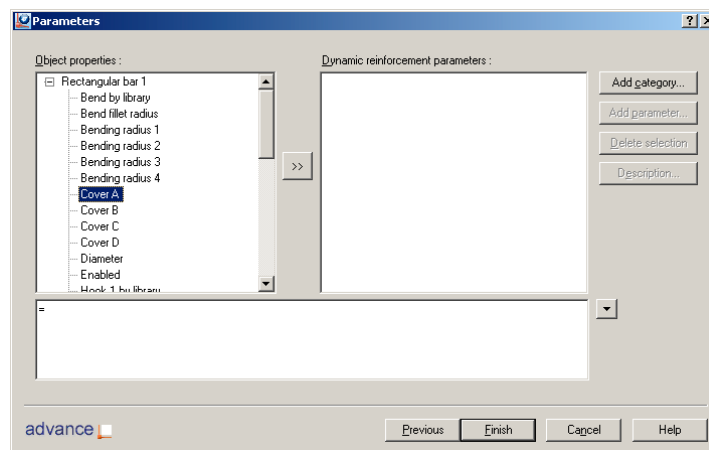


Automatic concrete covers for dynamic reinforcement solutions

→ The dynamic reinforcement solutions are linked with the default covers from the project settings.

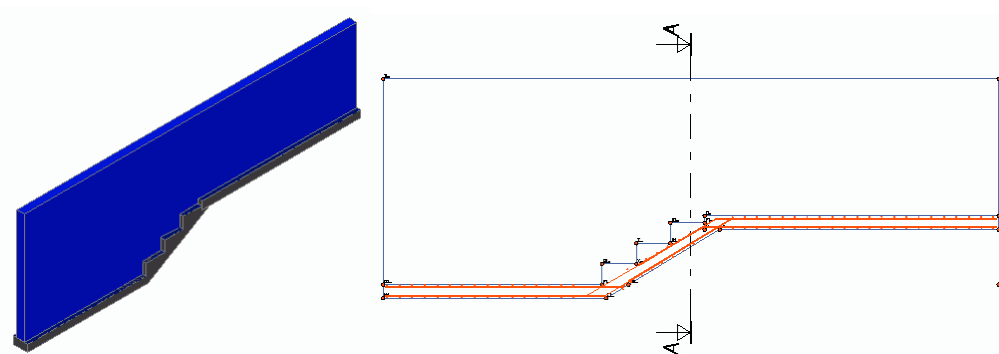


The link to the dynamic reinforcement is made by parametric formulas specified when saving the solution.



Dynamic reinforcement solutions for stepped footings

→ Dynamic reinforcement solutions can be defined for stepped footings.

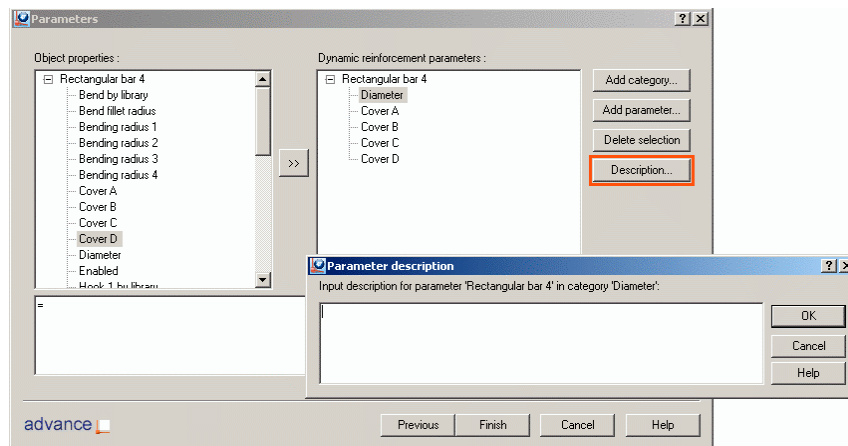


Dynamic reinforcement solutions for wall brick shelves

→ Dynamic reinforcement solutions can be defined for wall brick shelves.

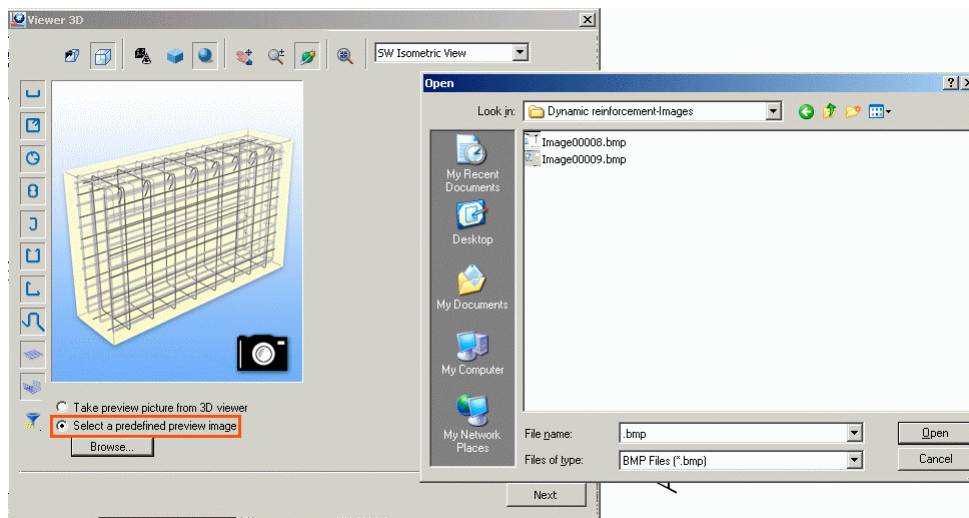
Dynamic reinforcement solution – Parameter description

→ For each parameter, the user can add a description.



Dynamic reinforcement solution – Preview images

→ A new option is available for selecting a .bmp file as a preview image.



DRAWINGS

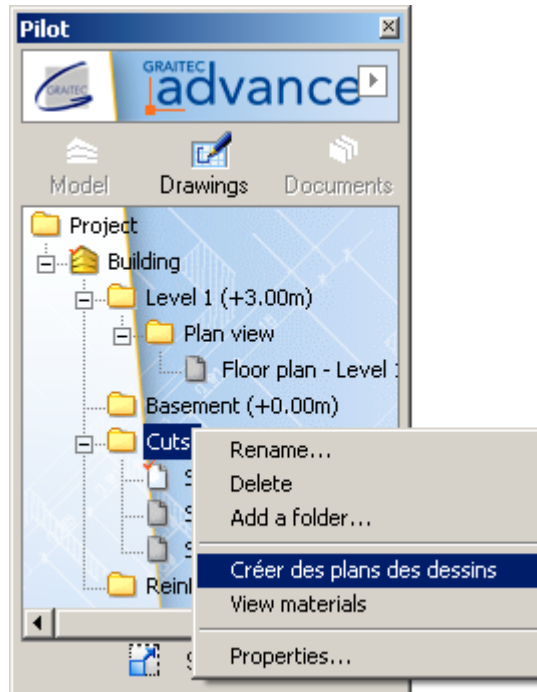
Improved top bottom views representation

→ Impact hatches are represented below other elements in calculated top/bottom views.

DOCUMENTS

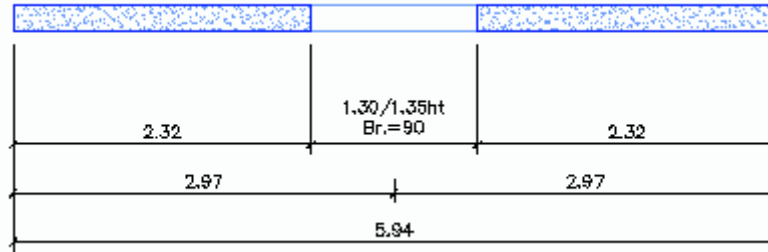
Layouts – Creation of layouts from pilot folders

→ Layouts for all drawings can be created in a selected folder.



Miscellaneous

→ The opening dimensions can be displayed above the dimension line.



→ Long license files (when feature names exceed 300 bytes) no longer cause problems.

→ Bars assigned to multiple elements are placed correctly on the dynamic reinforcement drawings.

→ The **Material manager** displays the dynamic reinforcement bars assigned to structural members.

→ Tolerance in dynamic reinforcement matching: The dynamic reinforcement solutions are applied to elements placed at large coordinates.

→ The bending detail errors (###) triggered by the Z view distribution are no longer appearing.

→ In the aSa standard, the bar shapes are correctly recognized.