

Advance Concrete 8.1 SP2 “What’s new”

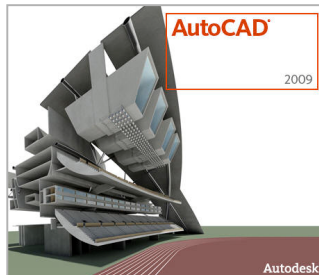


www.graitec.com

TECHNOLOGY

AutoCAD 2009 Compatibility

→ Advance Concrete is compatible with AutoCAD 2004, AutoCAD 2005, AutoCAD 2006, AutoCAD 2007, AutoCAD 2008 and now AutoCAD 2009.



IFC exchange

→ Several corrections in the IFC format data exchange: for example, openings transfer.

Opening files from version 6.1

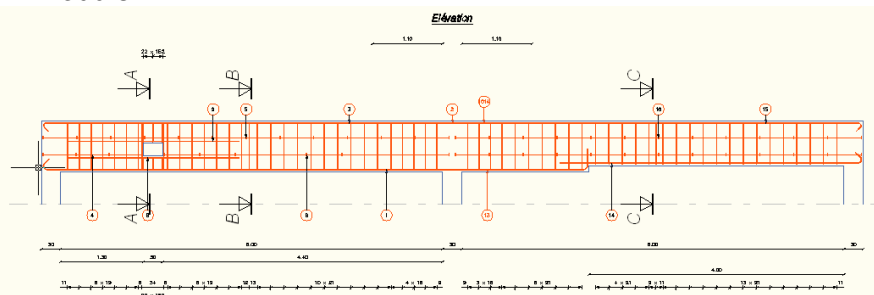
→ Files created with version 6.1 are opened without problems, particularly for viewing the elements created in the lowest level.

Point loads on beams

→ The point loads created on the beams are exported correctly to Arche Beam.

GTC : Importing beams from ARCHE

→ Several finishing improvements were done for beam drawings imported from the ARCHE Beam module.



GTC : model import

→ The level names are preserved when importing via the GTC.

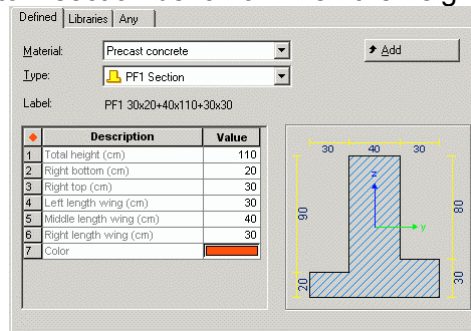
MODELLING PHASE

AutoCAD tools “Extend” and “trim”

→ The AutoCAD "extend" and "trim" functions work on 64-bit Windows Vista.

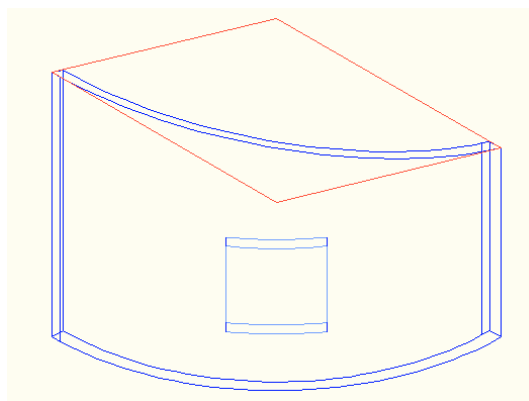
Custom sections

→ Correction of custom section behavior when the heights are greater than 1.



Model Watch tool

→ The Model watch tool does not display unexpected error messages for openings created in circular walls in the roof plan.



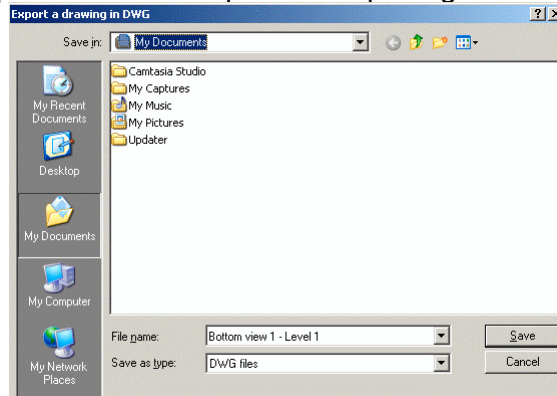
Slab openings

→ Some slab openings were not visible in the 3D rendering mode. This problem has been fixed.

DRAWINGS mode

Impact representation

→ The impact representation is kept when exporting the calculated views in DWG.



Level dimension symbol

→ The level dimension symbol is not rotated 90° after updating the local top/bottom views.

Symbol on the calculated views

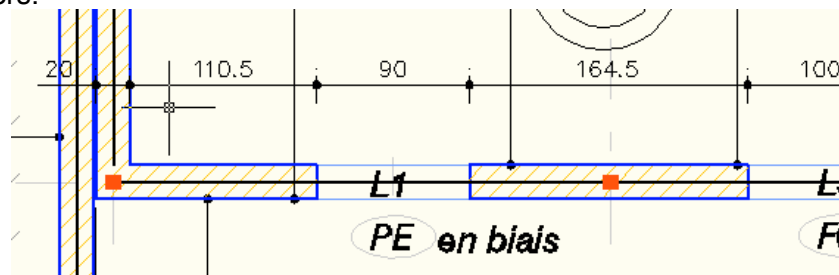
→ The symbols placed on the calculated views are updated when element properties are modified.

Associative dimension

→ In some cases the associative dimensions could not be used on the calculated views. This item has been fixed.

Intersection dimensions

→ During updates, the intersection dimensions follow the utilization rules of meters and centimeters.



Drawing activation

→ The drawing activation time has been reduced.

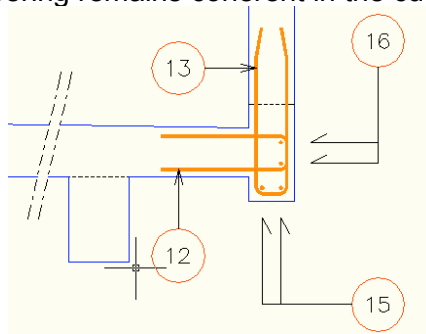
REINFORCEMENT

Bent mesh quantity calculation

→ The total number of bent meshes for the quantitative distribution is not affected by changing the panel type.

Renumbering tool

→ The point bar numbering remains coherent in the cut type distributions.

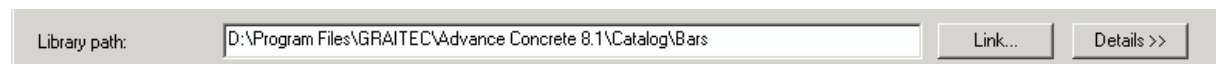


Linear distribution

→ The central space between the bars of a Caquot distribution is optimized.

Bars library

→ It is now possible to define a working folder for the bar library.



Reo Watch tool

→ The Reo watch tool does not display error messages when creating quantitative distributions of the point bars in the French version.

Bending detail


→ The texts on the bending details are updated when modifying the definition bar even if the texts are moved manually.

Straight bar

→ Correction of an error that appears during straight bar creation, when the Smartbar is not displayed.

Mesh list

→ Taking into account all mesh types in the list, including ST25CS and ST50C (French versions).

 FABRIC SCHEDULE (Metrics)					
FABRIC TYPE	Quantity	Weight (kg)	FABRIC TYPE	Quantity	Weight (kg)
			ST25CS	4	115.95
			ST50	9	685.2
			ST50C	5	568.8

Mesh list

→ The multiplication factor is taken into account in the mesh list.