

Advance Design 2019 R2 – Hotfix 2

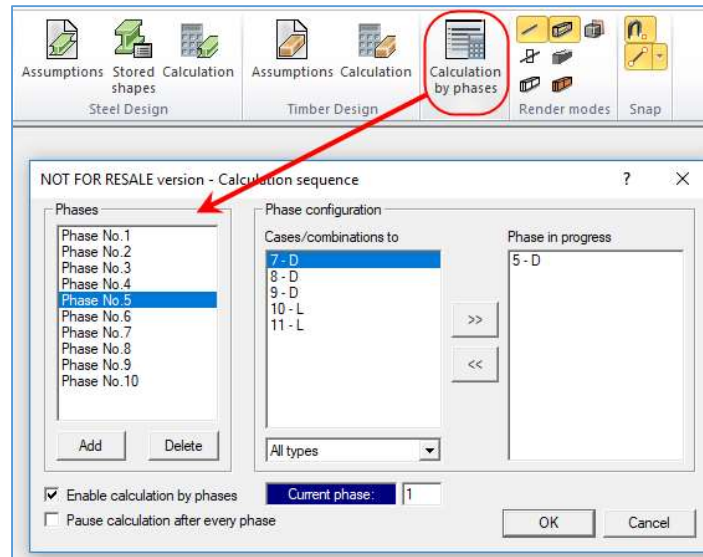


The **Hotfix 2** to **Advance Design 2019 R2** includes a number of improvements and corrections, which are summarized in the current document.

MISCELLANEOUS IMPROVEMENTS & CORRECTIONS

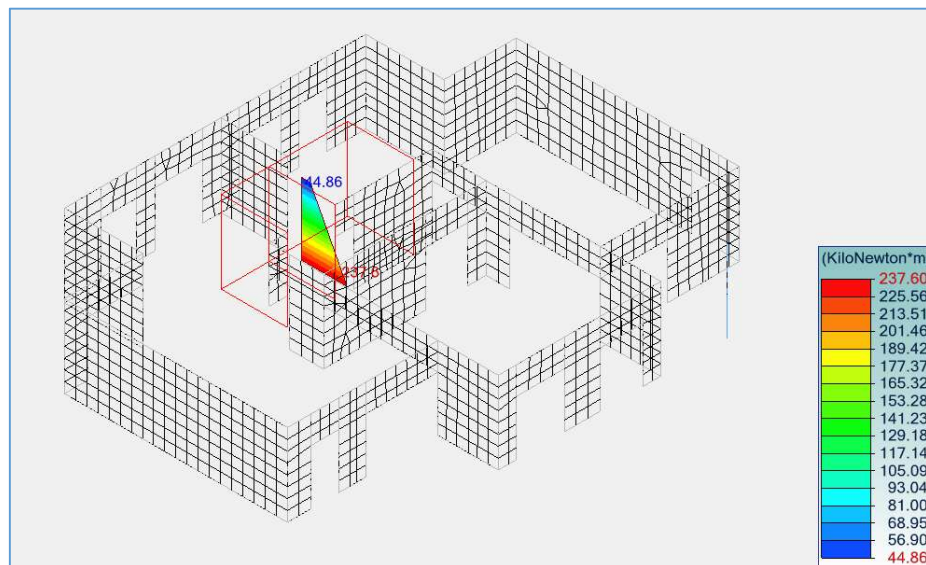
1: STEP-BY-STEP CALCULATION DEFINITION

Calculation phases defined for a step-by-step analysis were not properly saved if more than 9 phases were created by the user (#19175).



2: RESULTANT FORCES ON WALL GROUPS

The resulting forces on a group of walls were different depending on the walls being selected or not. The center of gravity of the wall group was also altered. This issue is now fixed (#18450).



Before installing this Hotfix, please uninstall any previous version of Advance Design 2019.