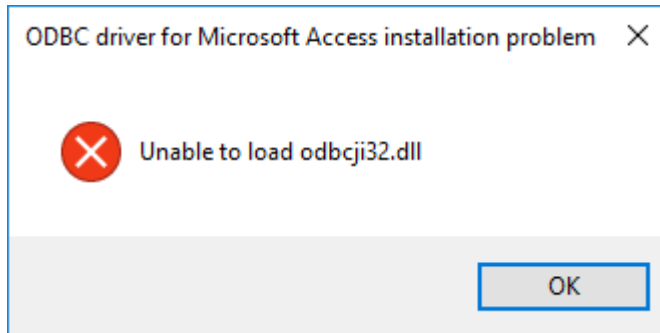


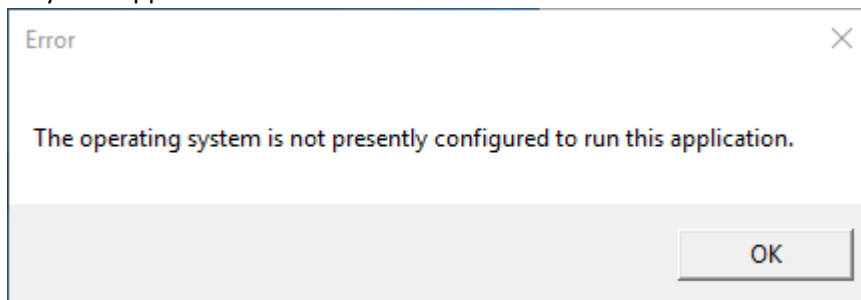
# “Unable to load odbcji32.dll” error

## Issue

When launching Advance Steel 2016 (64-bit) on Windows 10 (64-bit), a dialog appears several times before the software is able to start. Click the OK button until it disappears.



A different error dialog, “The operating system is not presently configured to run this application” may also appear several times.



The software should boot up, and the same “Unable to load odbcji32.dll” error may appear.

## Cause

The problem occurs because 64-bit software requires 64-bit database drivers to be installed on the system to be able to connect to Access files via ODBC or FDO. The default for Microsoft Office is 32-bit.

## Solution 1

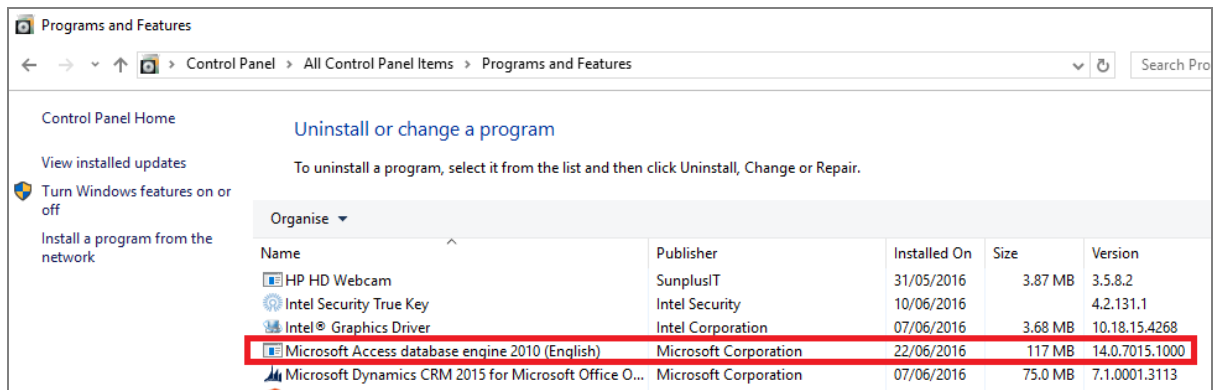
If 32-Bit Office is installed, one solution is to **install 64-Bit Office**. The 64-bit database drivers will be installed on the system during the installation and the ODBC Connection should work.

## Solution 2

**Reinstall AccessDatabaseEngine\_x64.exe from the Advance Steel installation DVD.**

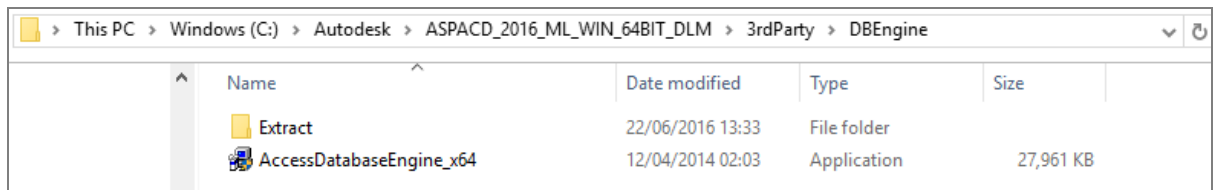
1. Check **Control panel > Add / Remove programs** to see the Microsoft Access Database engine version is installed.

 Microsoft Access database engine 2010 (English)	Microsoft Corporation	01/06/2016	276 MB	14.0.4763.1000
---	-----------------------	------------	--------	----------------



2. In **Programs and Features**, uninstall the Access 2010 driver.
3. Locate the database **AccessDatabaseEngine** file within the stored location on the hard disk of the PC:

[C:\Autodesk\ASPACD\\_2016\\_ML\\_WIN\\_64BIT\\_DLM\3rdParty\DBEngine](C:\Autodesk\ASPACD_2016_ML_WIN_64BIT_DLM\3rdParty\DBEngine)



4. Reinstall the driver from the C: drive location. Run through the install popups, then recheck that the driver is in place in **the Control Panel > Programs and Features**.
5. Run AutoCAD 2016. Close AutoCAD 2016 and run Advance Steel 2016. The problem of the ODBC error should be cleared.