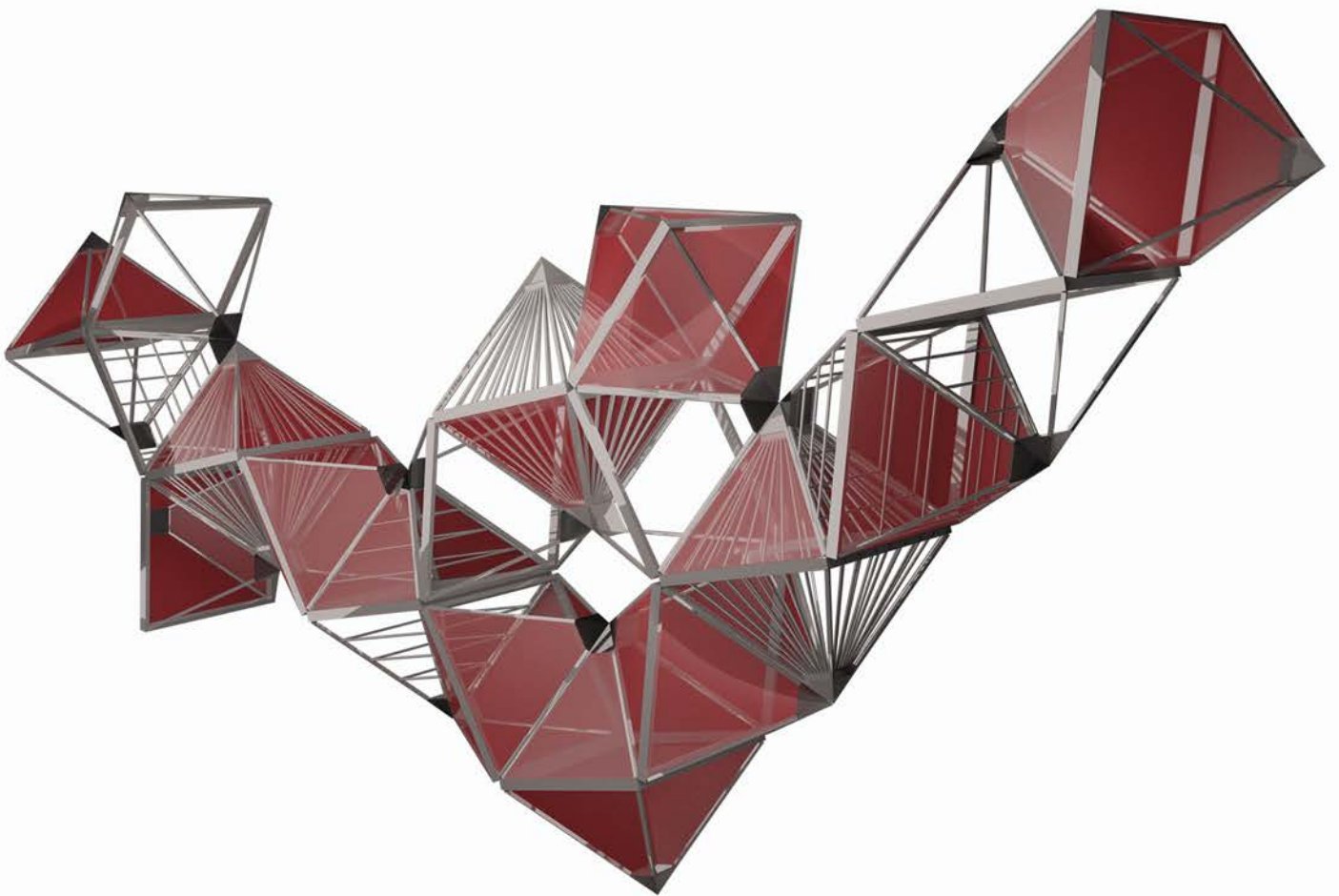


# What's New

## **G** ADVANCE **WORKSHOP**

### 2018 R2





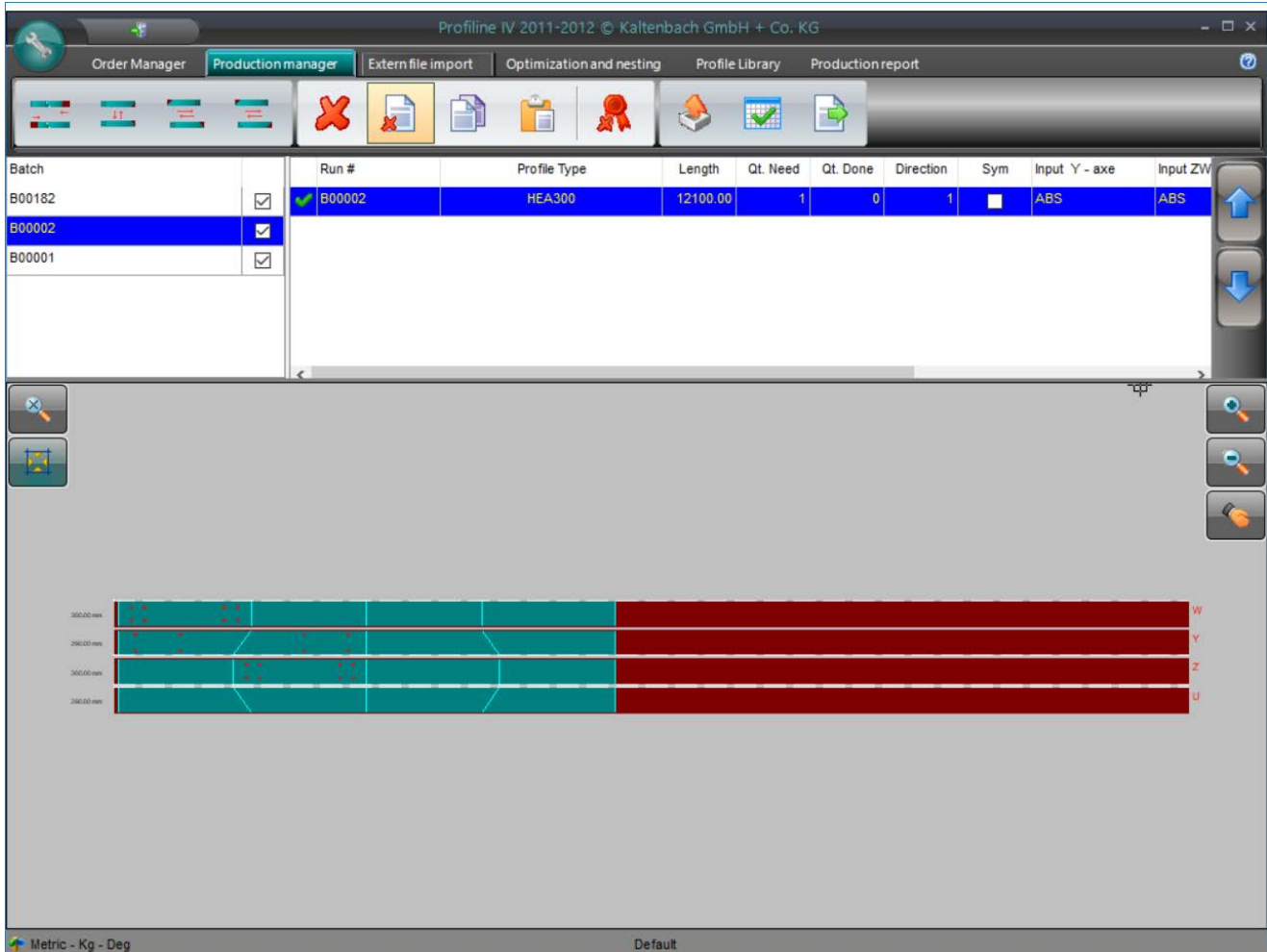
## Table of Contents

<b>NEW DRIVER FOR KALTENBACH CNC MACHINE .....</b>	<b>5</b>
<b>NEW SDS2 XML IMPORT .....</b>	<b>6</b>
<b>OPTIMIZATION FOR IFC/XML AND SMLX IMPORT .....</b>	<b>6</b>
<b>NEW FILTER FOR RECTANGULAR PLATES .....</b>	<b>7</b>
<b>NEW FILTER FOR HOLE DIAMETER .....</b>	<b>7</b>
<b>CONNECTION BETWEEN AW AND BYZNYS ERP SOFTWARE .....</b>	<b>8</b>
<b>NEW FEATURE FOR PARTS DISCHARGE FROM CNC MACHINE .....</b>	<b>8</b>
<b>NEW CAPABILITY TO PRINT LABELS IN EACH WORKCENTER .....</b>	<b>9</b>
<b>NEW ESTIMATION MODULE .....</b>	<b>9</b>
<b>NEW PLATES FROM POINTS .....</b>	<b>10</b>
<b>NEW FEATURE FOR INSERTING HOLES FROM RIGHT TO LEFT .....</b>	<b>10</b>
<b>NEW FEATURE FOR VIEWING ROUND TUBES IN 3D .....</b>	<b>11</b>



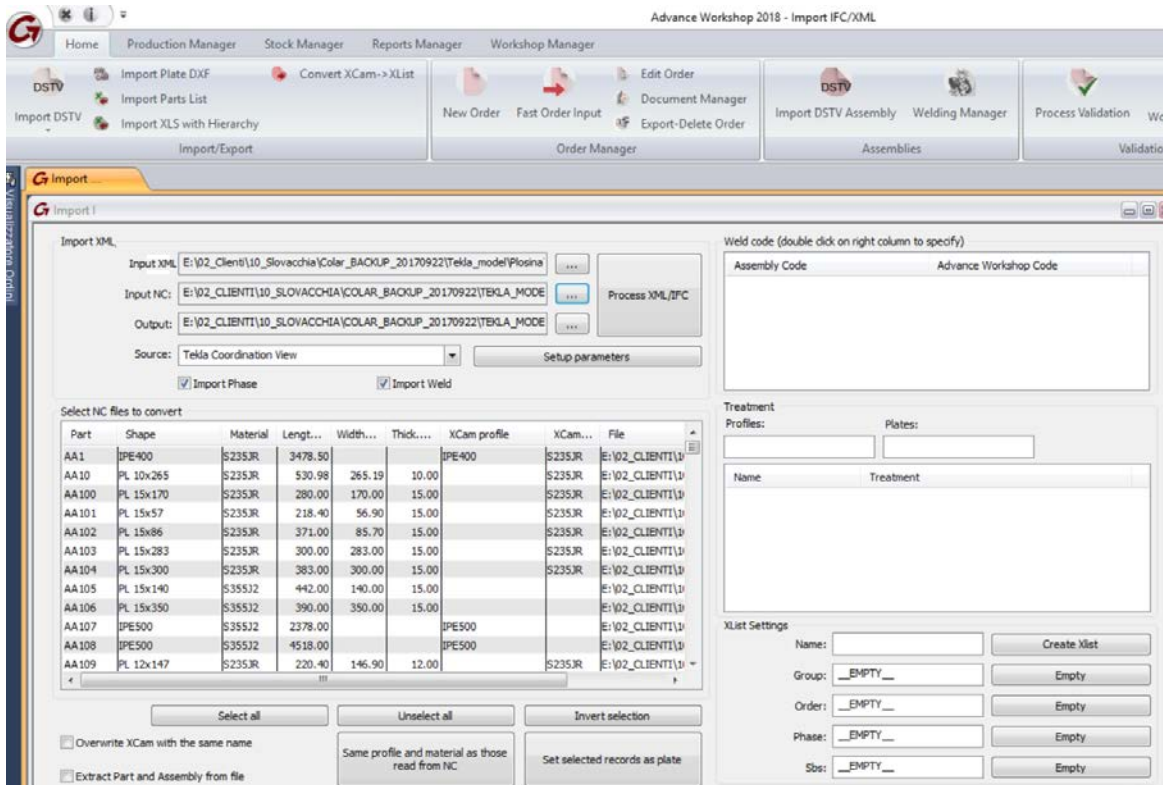
## New Driver for Kaltenbach CNC Machine

Following several customer requests, GRAITEC's development team implemented a specific driver for Advance Workshop, making it one of the first software capable of communicating with the new generation of Kaltenbach machines across Kaltenbach software "Profiline IV".



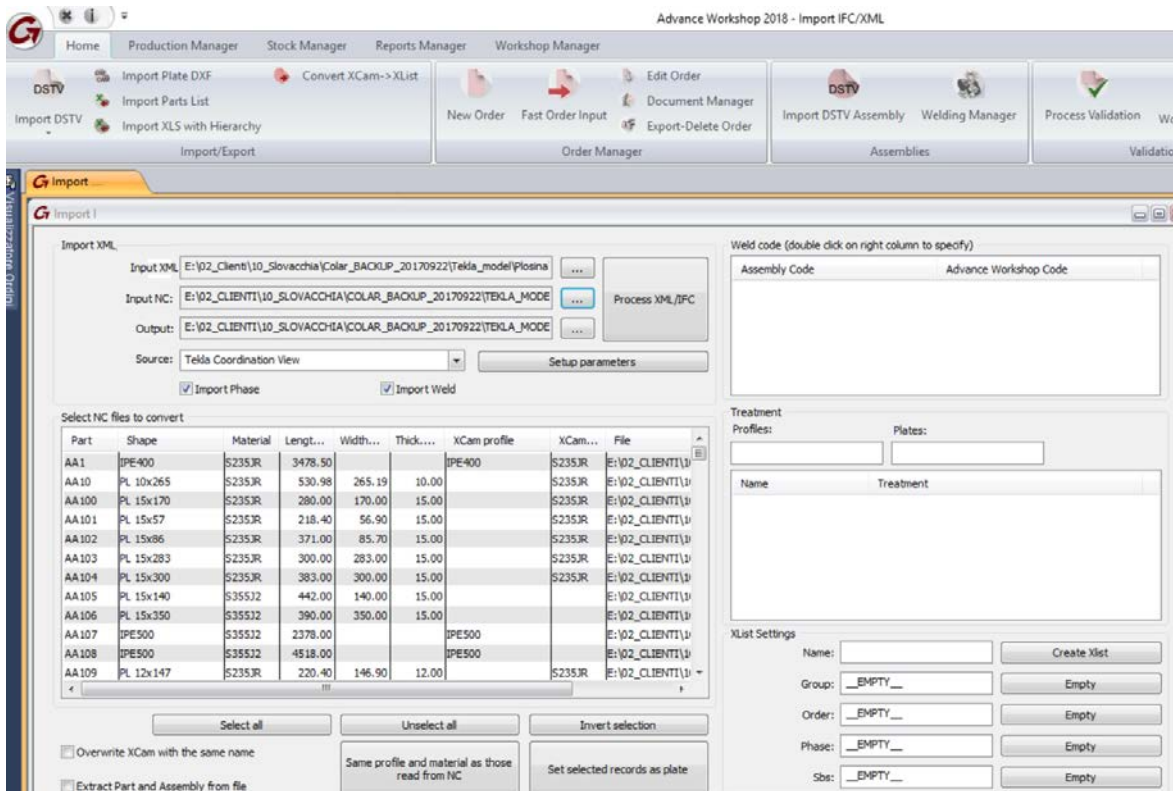
## New SDS2 XML Import

Following a customer request, it is now possible to import SDS2 files "XML format" in Advance Workshop.



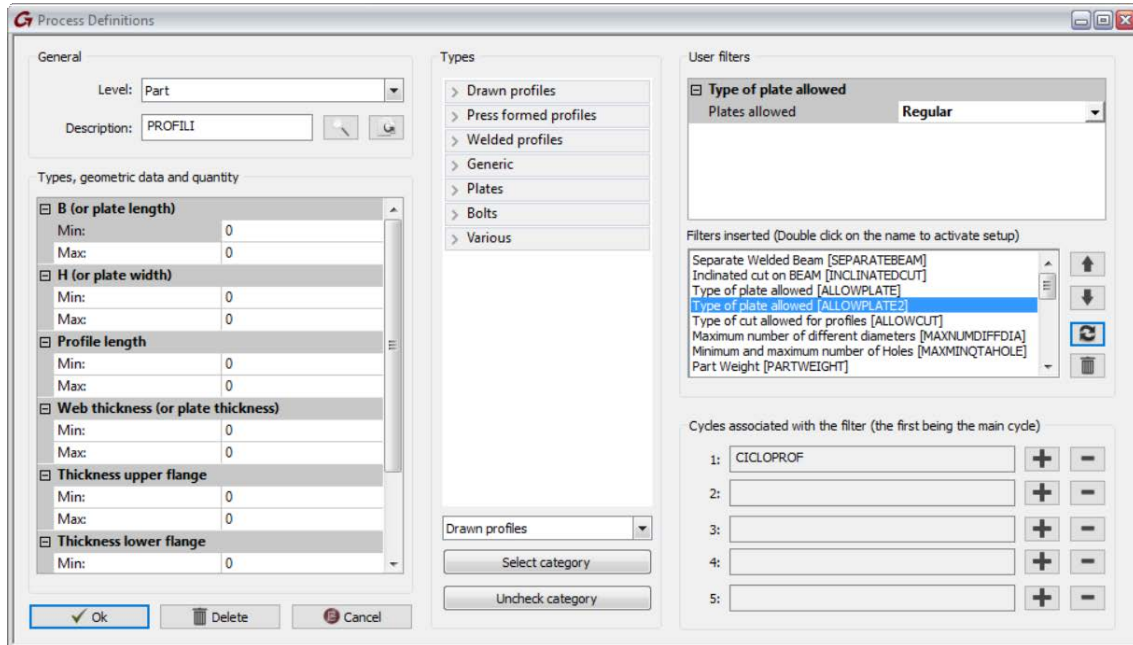
## Optimization for IFC/XML and SMLX Import

Following a customer request, it is now possible to import selections of direct treatment in Advance Steel or Tekla model.



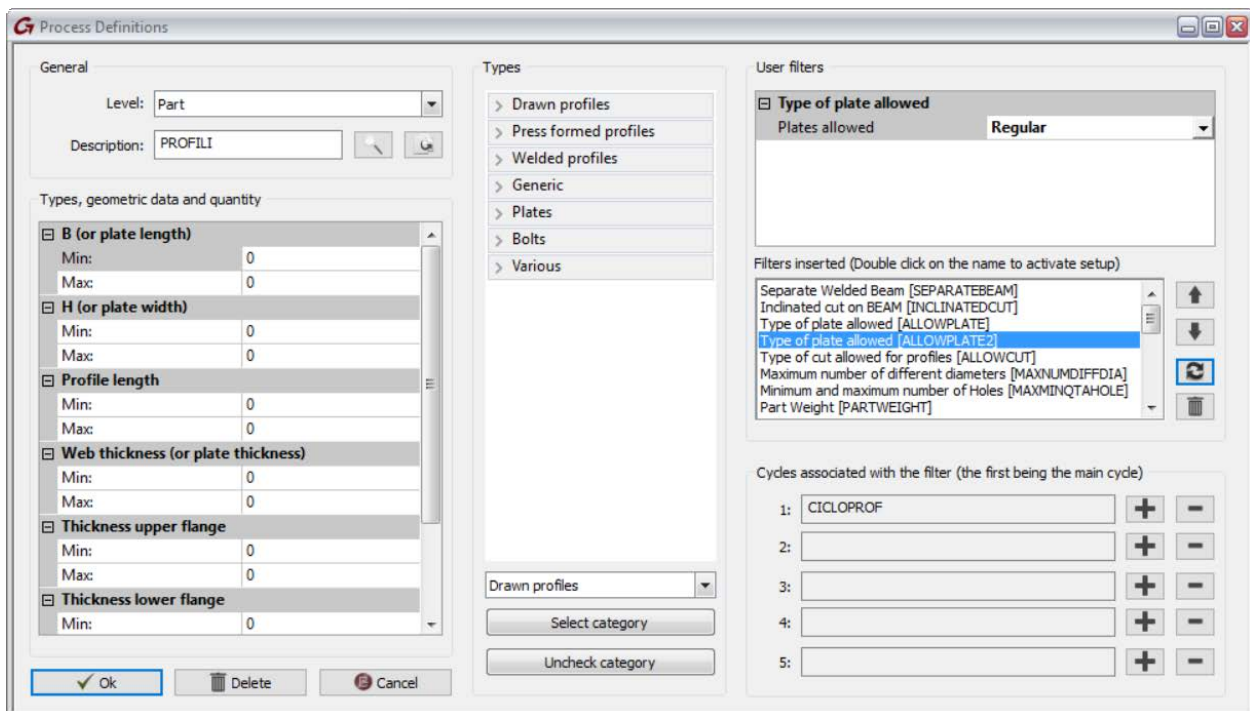
## New Filter for Rectangular Plates

Advance Workshop now allows sorting of parts for plate contour. During process definition, it is now possible to choose a new filter for rectangular / square plates. Furthermore, plate contour limitations regarding the workcenter can now be marked.



## New Filter for Hole Diameter

Advance Workshop can now sort holes' diameters of all parts. During process definition, it is now possible to choose a new filter for the minimum and maximum diameter of holes.



## Connection between AW and BYZNYS ERP Software

Following a request from the Czech market, a new bidirectional connection between Advance Workshop and BYZNYS ERP software was added.



## New Feature for Parts Discharge from CNC Machine

Following a request from the Austrian market, a new bidirectional connection allows Advance Workshop to automatically receive and discharge parts manufactured with a CNC machine.

Advance Workshop 2018 - Unload Element from TimeReader

Home Production Manager Stock Manager Reports Manager Workshop Manager

Work Centers Bar Centers Bar Nesting Plate nesting Parts Discharge Bars Discharge Unload Element from TimeReader Cancel Discharge Update bars View Planner Work Progress

Fabrication Manager Product

**Unload Element from TimeReader**

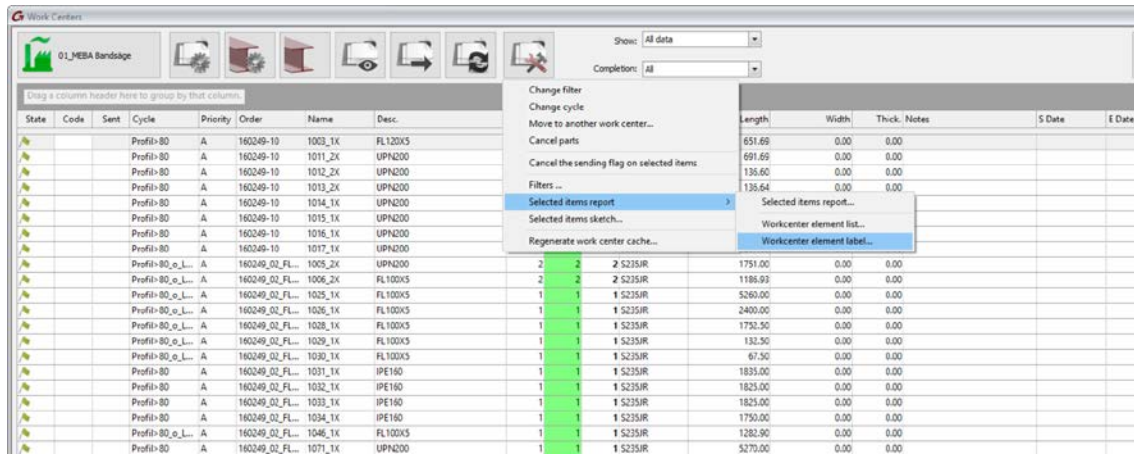
Filters  
Data Type <all> CNC <all>

ID	T...	Date	Order	Element	Certificate	Description	Operator	V...	V...	CNC TReader	CNC AW	Signature
1104	Part	16/08/2017	170407_14_AGRU	1000		UPN220 S23530 (4229.00)	UNKNOWN			1 EXCALIBUR	04_Excaltbur	0101
1105	Part	16/08/2017	170407_14_AGRU	1000		UPN220 S23530 (4229.00)	UNKNOWN			1 EXCALIBUR	04_Excaltbur	0101
1106	Part	16/08/2017	170407_14_AGRU	1000		UPN220 S23530 (4229.00)	UNKNOWN			1 EXCALIBUR	04_Excaltbur	0101
1107	Part	16/08/2017	170407_14_AGRU	1002		UPN220 S23530 (4450.00)	UNKNOWN			1 EXCALIBUR	04_Excaltbur	0101
1108	Part	16/08/2017	170407_14_AGRU	1002		UPN220 S23530 (4450.00)	UNKNOWN			1 EXCALIBUR	04_Excaltbur	0101
1109	Part	16/08/2017	170407_14_AGRU	1002		UPN220 S23530 (4450.00)	UNKNOWN			1 EXCALIBUR	04_Excaltbur	0101
1110	Part	16/08/2017	170407_14_AGRU	1002		UPN220 S23530 (4450.00)	UNKNOWN			1 EXCALIBUR	04_Excaltbur	0101
1111	Part	16/08/2017	170407_14_AGRU	1002		UPN220 S23530 (4450.00)	UNKNOWN			1 EXCALIBUR	04_Excaltbur	0101
1112	Part	17/08/2017	170407_14_AGRU	1002		UPN220 S23530 (4450.00)	UNKNOWN			1 EXCALIBUR	04_Excaltbur	0101
1113	Part	17/08/2017	170407_14_AGRU	1002		UPN220 S23530 (4450.00)	UNKNOWN			1 EXCALIBUR	04_Excaltbur	0101
1114	Part	17/08/2017	170407_14_AGRU	1002		UPN220 S23530 (4450.00)	UNKNOWN			1 EXCALIBUR	04_Excaltbur	0101
1115	Part	17/08/2017	170407_14_AGRU	1003		UPN220 S23530 (5650.00)	UNKNOWN			1 EXCALIBUR	04_Excaltbur	0101
1116	Part	17/08/2017	170407_14_AGRU	1003		UPN220 S23530 (5650.00)	UNKNOWN			1 EXCALIBUR	04_Excaltbur	0101
1117	Part	17/08/2017	170407_14_AGRU	1002		UPN220 S23530 (4450.00)	UNKNOWN			1 EXCALIBUR	04_Excaltbur	0101
1118	Part	17/08/2017	170407_14_AGRU	1002		UPN220 S23530 (4450.00)	UNKNOWN			1 EXCALIBUR	04_Excaltbur	0101
1119	Part	17/08/2017	170407_14_AGRU	1002		UPN220 S23530 (4450.00)	UNKNOWN			1 EXCALIBUR	04_Excaltbur	0101
1120	Part	17/08/2017	170407_14_AGRU	1002		UPN220 S23530 (4450.00)	UNKNOWN			1 EXCALIBUR	04_Excaltbur	0101
1121	Part	17/08/2017	170407_14_AGRU	1002		UPN220 S23530 (4450.00)	UNKNOWN			1 EXCALIBUR	04_Excaltbur	0101



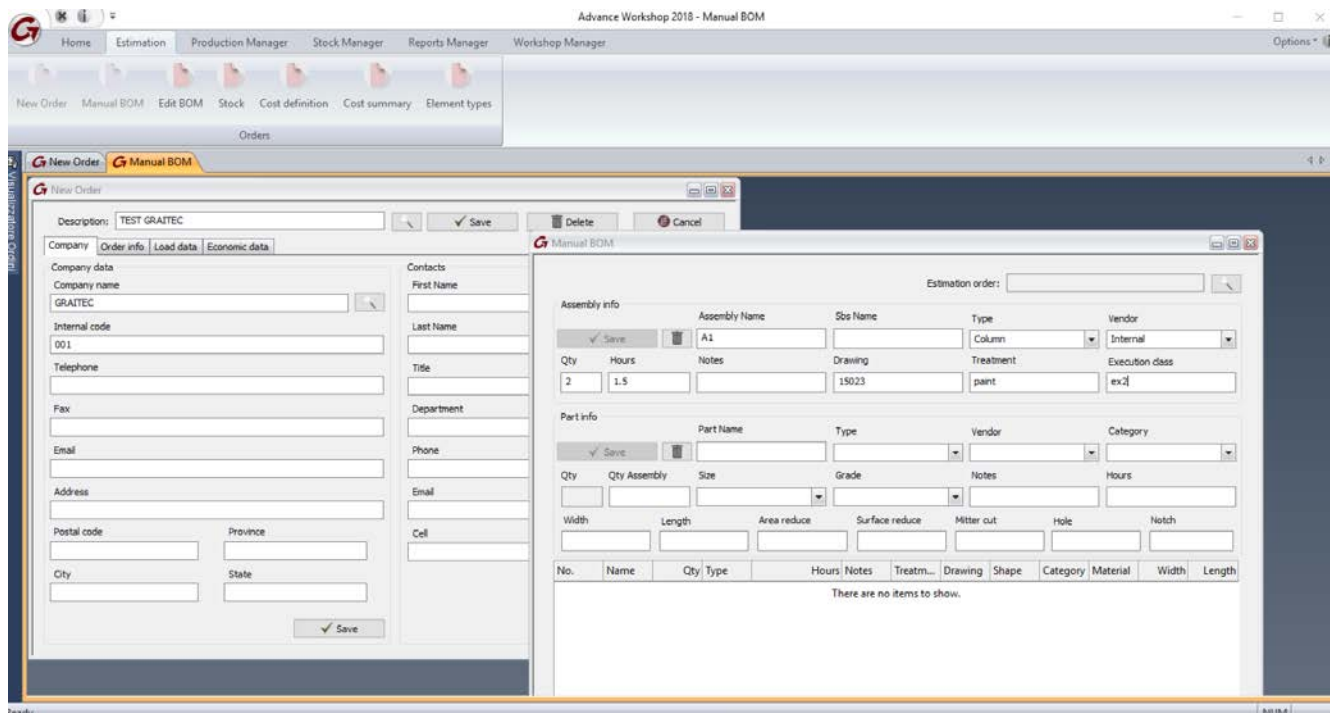
## New Capability to Print Labels in Each Workcenter

Following a request from the UK market, it is now possible to print single or multiple labels directly inside a workcenter.



## New Estimation Module

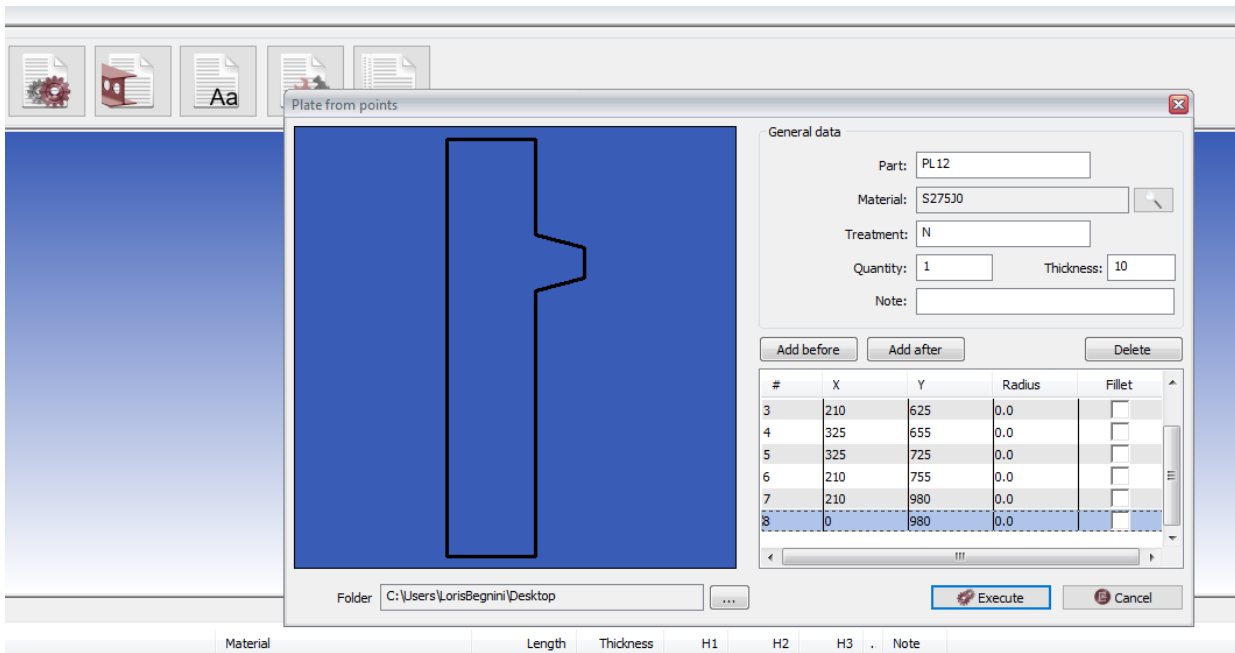
Following a request from the Canadian market, a new module for steel estimation was integrated in Advance Workshop. The module generates estimations based on the customer experience and creates a separate document containing information about materials and labor value. The estimation may be generated using Manual BOM or a BOM created from existing DSTV files.



## New Plates from Points

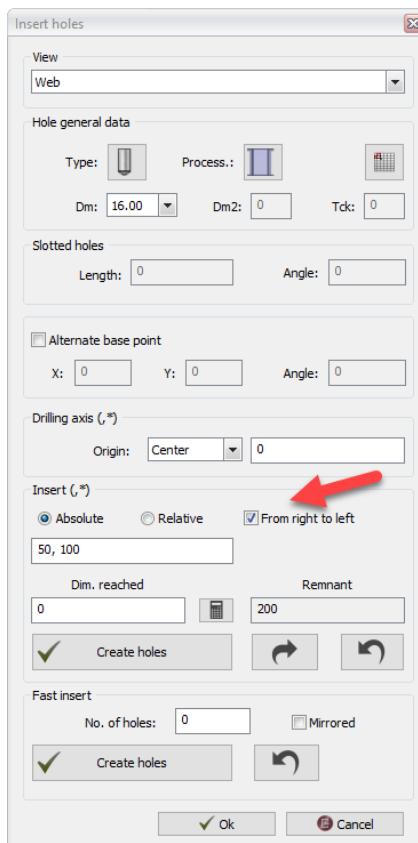
Following a request from the ELETTRIC TOWER market, a new feature for creating plate contour from points was added to Advance Workshop.

The new feature helps create or modify plates by inserting points, as well as the radius.



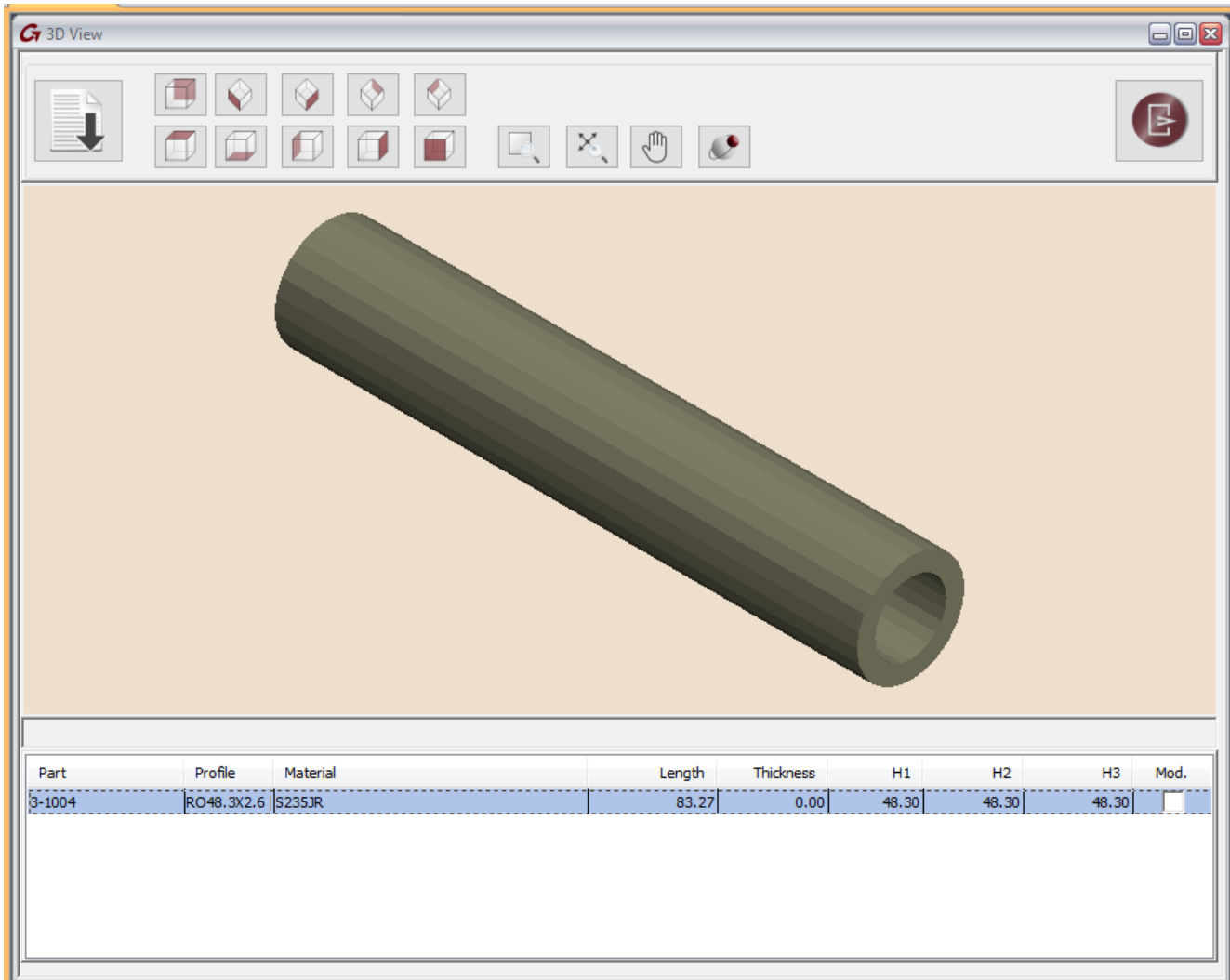
## New Feature for Inserting Holes from Right to Left

Following a request from the ELETTRIC TOWER market, a new feature was integrated in Advance Workshop. The feature allows holes to be inserted from right to left, making it easier to create holes on profiles or plates.



## New Feature for Viewing Round Tubes in 3D

Advance Workshop 2018 R2 introduces the possibility of displaying round tubes with features in 3D view.





[www.graitec.com](http://www.graitec.com)