

# Advance CAD 2016 SP2

---



This document describes the improvements in **Advance CAD Service Pack 2**.

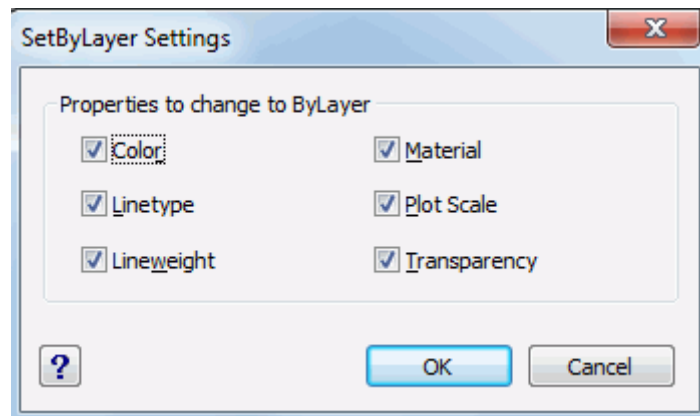
## NEWS

### **1: ADDITIONAL COMMAND: SETBYLAYER**

The SETBYLAYER command changes the property overrides of selected entities to ByLayer. The user can specify which properties are changed to ByLayer, from a list containing color, linetype, lineweight, materials, plot scale and transparency.

When calling the SETBYLAYER command, the user can choose to:

- press Return in order to display the Settings dialog box; or
- select the entities to be affected by the command.



The SETBYLAYER command also works for entities inside blocks.

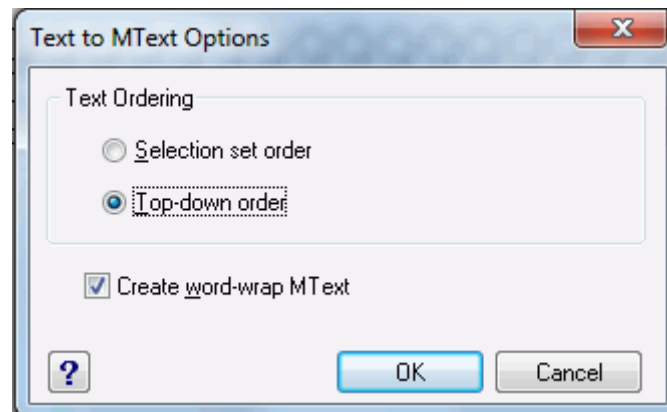
After executing the command, a message is displayed in the command line, stating how many entities were modified.

## **2: NEW COMMAND TO CONVERT TEXT TO MTEXT: TXT2MTXT**

The TXT2MTXT command allows users to convert one or more single-line text objects to a multiline text object.

After typing TXT2MTXT into the command line, the user can choose to:

- press Return in order to display the Options dialog box; or
- select entities to convert to multiline text.



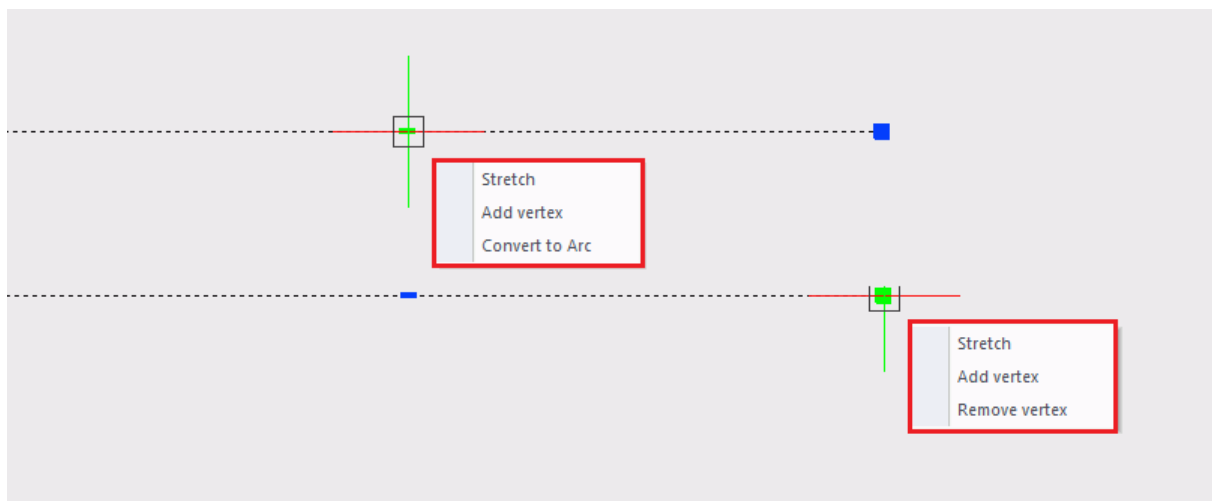
After applying the TXT2MTXT command, selected text entities will be removed from the drawing and a new multiline object will be created.

A message is displayed in the command line stating the number of text entities that have been removed.

## **3. ADDED INTELLIGENT GRIPS OF POLYLINE**

The behavior of the polyline entity has been improved thanks to this feature. The following actions were included when pointing over a grip of the polyline:

- Stretch and Add / Remove vertex for the endpoint grips of the polyline
- Stretch, Add Vertex and Convert to Arc for the middle grip of the polyline

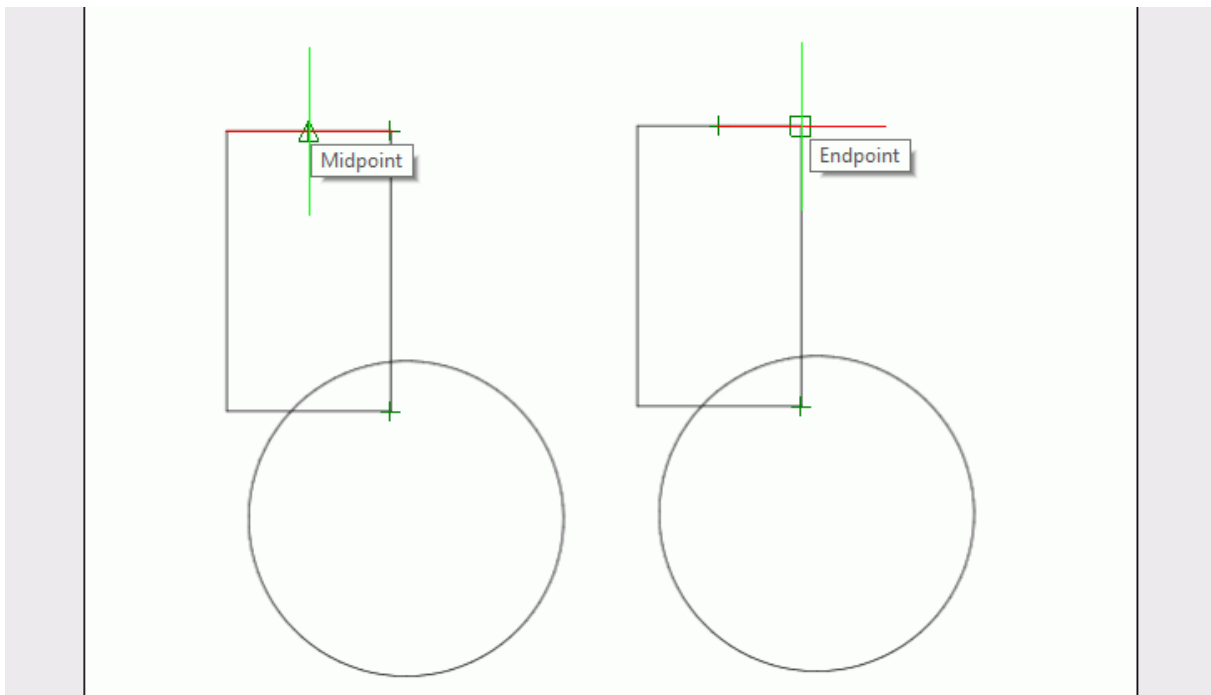


Also, the development includes the possibility to turn on/off menu of grips due to the new system variable: GRIPMULTIFUNCTIONAL.

- 0 = Multifunctional grip options are not available.
- 1 = Multifunctional grip options can be accessed by pressing Ctrl to change grip behavior (Ctrl-cycling).
- 2 = Multifunctional grip options can be accessed via the grip menu displayed when you hover over a grip.
- 3 = Multifunctional grip options can be accessed with both Ctrl-cycling and the grip menu.

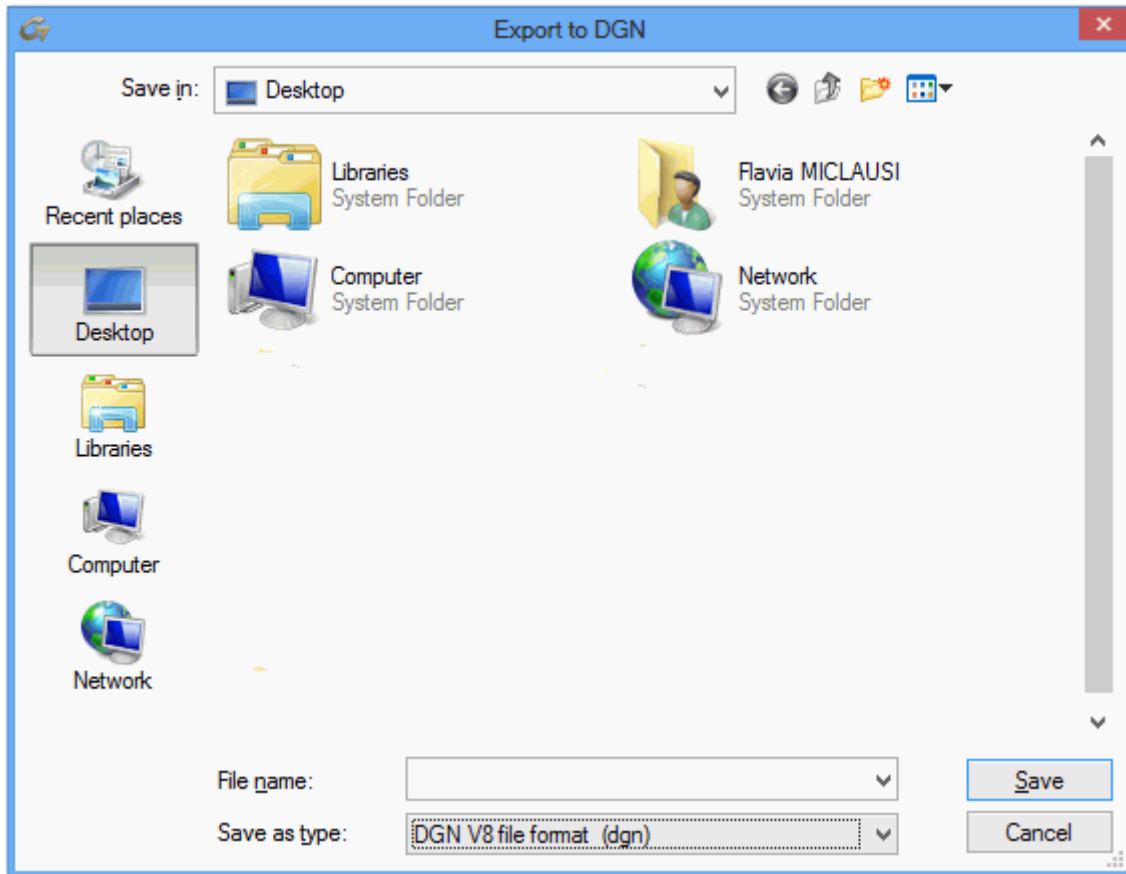
#### **4: SNAP TO PDF**

Snap points are now recognized when attaching a pdf file that contains drawing entities.



## **5: NEW COMMAND: DGNEXPORT (DGN FORMAT)**

Advance CAD 2016 SP2 allows the user to export MicroStation Design files. The export of DGN 8 files is also supported now.



## **IMPROVEMENTS**

### **1: MEMORY/SPEED IMPROVEMENTS**

One of the major improvements brought about by Advance CAD 2016 SP2 is the increased speed in redrawing objects. This has a great impact on many operations: zoom, pan, orbit, regen.

Also, the amount of memory used by Advance CAD 2016 SP2 when loading a project has significantly decreased compared to previous versions.

### **2: DIMENSIONS**

There were several problems when moving objects with associated dimensions. These issues have been corrected and the dimensions now are moving together with the object.

### **3: 2D AND 3D MODELING**

- The UNDO command now behaves as expected when it is used for polyline edit operations.
- The options ADD TO GROUP and REMOVE FROM GROUP are now correctly applied.
- Problems occurring when trying to copy objects to the Clipboard have been fixed.
- When disabling the command line, the history of used commands was not saved. This issue is now fixed.
- The problems that appeared when the user tried to switch the transparency on/off have been fixed. The TRANSPARENCY button from the status bar now remembers the last settings selected by the user.
- Issues related to the use of ORTHO and POLAR commands have now been corrected.
- The Flatten command is now correctly applied and objects are no longer removed.
- There were a couple of situations when Join or Convert line to polyline commands were not performed correctly. Improvements have been made to preserve the linetype scale.
- Several issues relating to the input of FILLET and CHAMFER commands in the situation of large coordinates in the project have been corrected.
- The ZOOM PREVIOUS command now returns to the last ZOOM VIEW.
- There were particular problems when selecting a new line type within a drawing. These issues have been corrected for Advance CAD 2016 SP2.
- Several issues related to opening drawings in Advance CAD, especially when the drawing contained a data link (with xls file), have been improved.

### **4: HATCH**

- Several corrections have been made for the HATCH command, among which:
  - hatch boundaries for text and attributes within an enclosed area are correctly detected;
  - properties are correctly inherited.

## **5: BLOCKS**

- Several corrections have been made for the dynamic blocks, including problems related to:
  - keeping the perpendicular constraint;
  - displaying the dynamic block during zooming;
  - moving nested dimensions in dynamic blocks.

## **6: LAYER MANAGER**

- Issues regarding the display of RGB color and color names in Layer manager have been fixed.

## **7: LEADER**

- Problems regarding Leader with text have been fixed.

## **8: USER INTERFACE**

- The issue with loading commands from the quick access toolbar after the first run of the application has been corrected.
- In the Properties dialog, parameters are now correctly sorted: the General parameters come before the group of Geometry parameters.
- There were a couple of situations when the last settings applied in the tool palette were not remembered. These issues have been fixed.

## **9. OUTPUT RESULTS**

- When printing from layout, the scale of drawing was changed. This issue is now corrected.

## **10: PRINT IMPROVEMENTS**

- Custom print settings were reset following any modification. In Advance CAD 2016 SP2, this issue has been fixed.