



What's New

in PowerPack for Vault 2023.1



Table of contents

1. Welcome to GRAITEC PowerPack for Vault 2023.1	3
1.1 Compliancy with Autodesk Vault 2023 and 2022	3
2. Novelties – General	3
2.1 Export Structure to STEP	3
2.2 Create Drawing Pack.....	7
2.3 Get Folders on Log On	9
2.4 Videos	10

1. Welcome to GRAITEC PowerPack for Vault 2023.1

GRAITEC is very pleased to present the latest version of **Advance PowerPack for Vault2023.1** part of the Graitec Advance Suite.

1.1 Compliancy with Autodesk Vault 2023 and 2022

The Advance PowerPack for Inventor 2023.1 is compliant with Autodesk Vault2022 and 2023 versions. This means that version 2023.1 of the PowerPack for Vault can be installed on both versions of the platform.

2. Novelties – General

The 2023.1 Version of the GRAITEC PowerPack for Vault comes with new features:

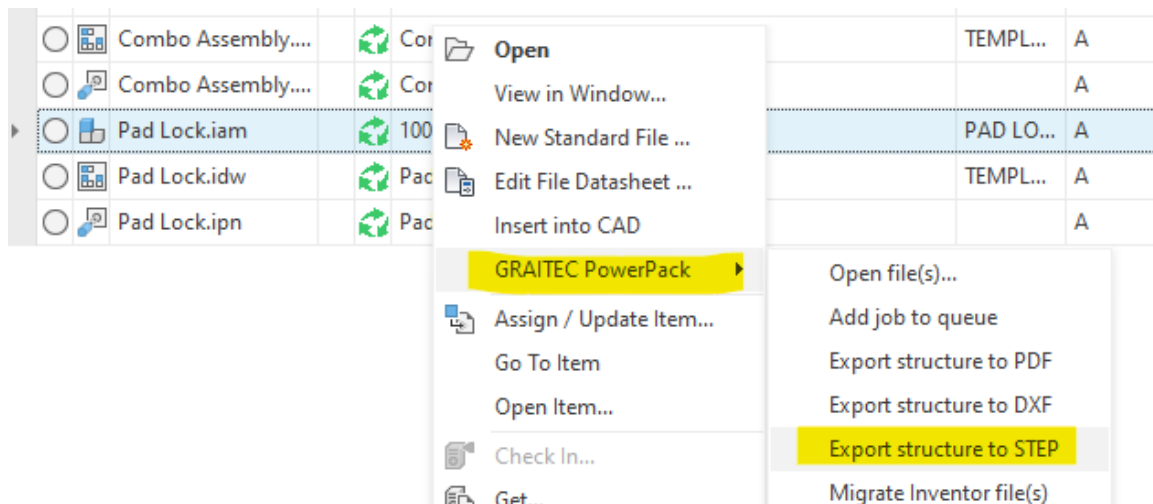
- Export Structure to STEP
- Create Drawing Pack
- Get folders on Log On

Besides the new functionalities, we have created a dedicated command to help the users learn more about PowerPack for Vault functionalities via the Graitec YouTube channel!

2.1 Export Structure to STEP

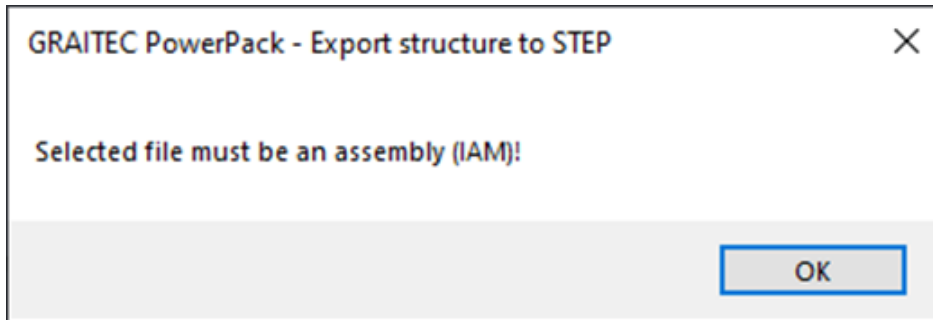
The function 'Export structure to STEP' creates a job for exporting all components of an Inventor assembly to STEP format. The output directory and the output file names are configurable.

This new feature 'Export structure to STEP' is placed inside the context menu 'GRAITEC PowerPack' of files:



Export Structure to STEP

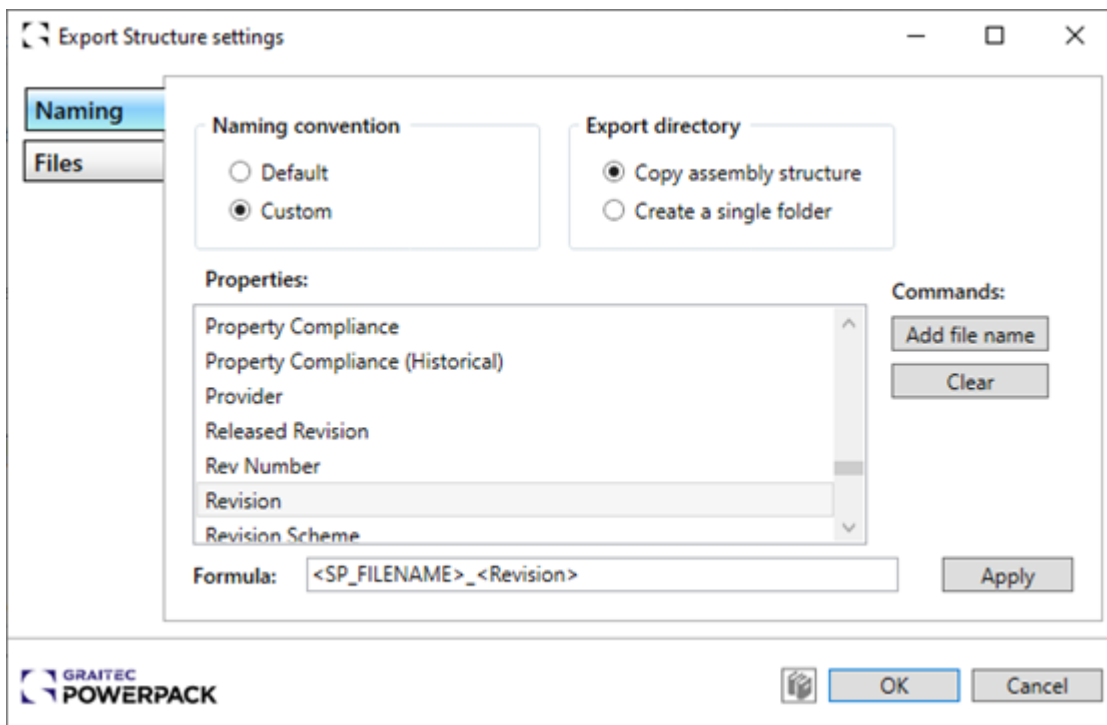
The function is designed only for Inventor assemblies (file type. iam). If the function is called for other file types a message is shown:



Warning message file type

Calling this function collects all subcomponents of the selected assembly and opens a dialog where you can configure the output to Step format for all these components.

In the naming tab you can configure the file names and directory structure of the output:



Export structure settings - Naming Tab

Naming convention

- **Default:** With *Default* naming convention the output file name of the step file is the same as the name of the Inventor model file with the additional suffix `<ipt|iam>` and the file extension `<step>`, e.g. `<Dial Plate_ipt.step>` for the assembly part `<Dial plate.ipt>`

- **Custom:** With selecting the *Custom* naming option the list box *Properties* gets active. The output file name of the step file can get configured by double-clicking one or more properties. These properties get inserted into the Formula text box. Splitter characters like dots or underscores or fixed text could also be part of the output name by typing this text directly into the text box.

The button **Add file name** inserts the name of the vault file (without extension) into the formula. The button **Clear** wipes out the text box so you can start with a new formula.

With the button **Apply** the formula for the output file name is evaluated. The result is shown inside the tab **Files**.

If the formula leads to non-unique file names the OK button gets deactivated. In this case, you must adjust the formula on the *Naming* tab or the *Export name* on the *Files* tab to confirm the Export Structure settings.

Export directory:

- Copy assembly structure: This option leads to subfolders according to the folder structure inside the Vault explorer for the output folders.
- Create a single folder: All output files are created inside a single folder.

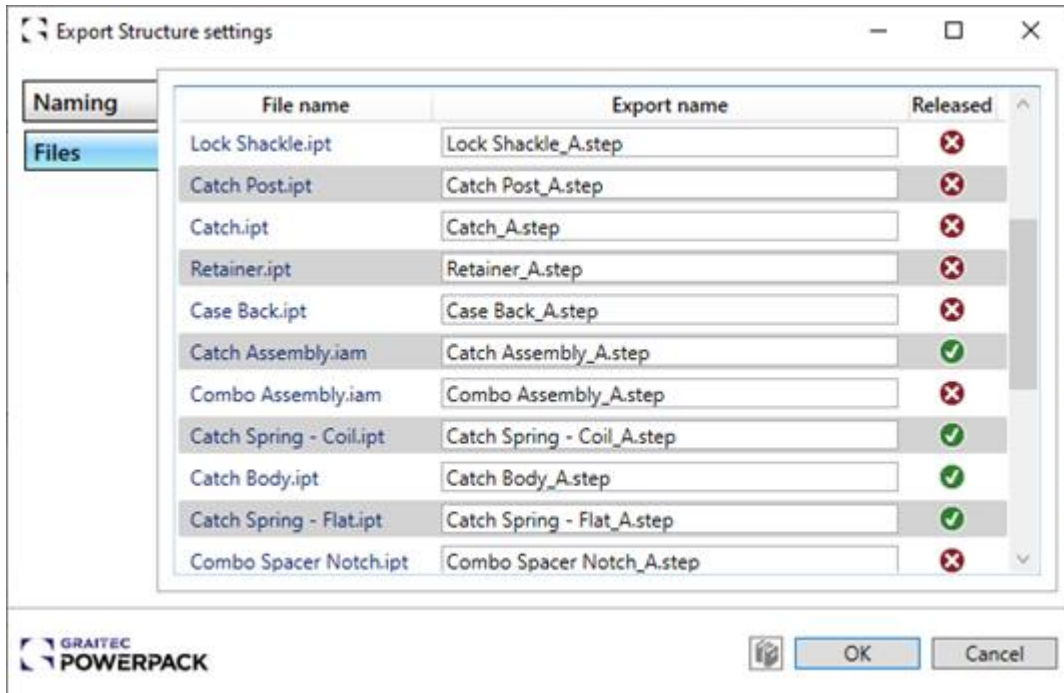
The export directory itself is configured directly inside the configuration file: C:\ProgramData\Autodesk\ApplicationPlugins\Graitec.VPP.bundle\Contents\2023\Config\ExportStructure.xml

```
<options>
<exportpathpdf>c:\ProgramData\Graitec\Advance Extensions 2023\Advance PowerPack\Vault\Output\ExportStructure\PDF</exportpathpdf>
<exportpathdxg>c:\ProgramData\Graitec\Advance Extensions 2023\Advance PowerPack\Vault\Output\ExportStructure\DXG</exportpathdxg>
<exportpathstep>c:\ProgramData\Graitec\Advance Extensions 2023\Advance PowerPack\Vault\Output\ExportStructure\STEP</exportpathstep>
```

Configuration file – Export Directory

You can change the folder inside the tag <exportpathstep> to configure an individual export directory for the step files.

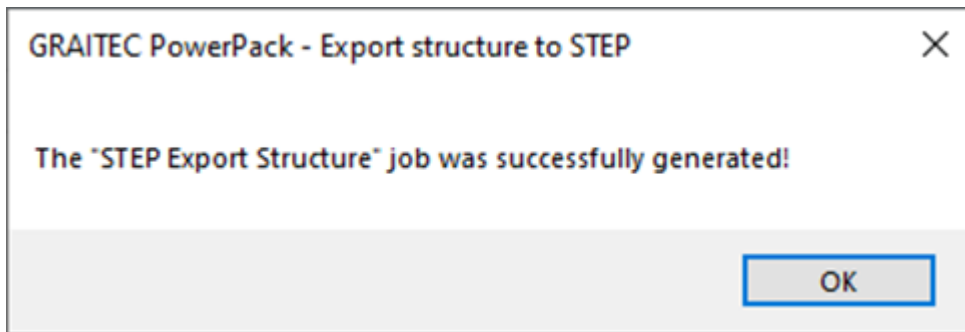
The *Files* tab shows all subcomponents with the resulting output file names and a flag if the file is in a *Released* state or not:



Naming Tab after export

The file list shows the export names of each file representing the settings of the Naming tab. The export names can get changed by typing in the desired export name directly into the text box. This could be useful if the formula of the Naming tab leads to non-unique export names (see above).

Confirming the dialog creates the job 'VPP.ExportStructure'.

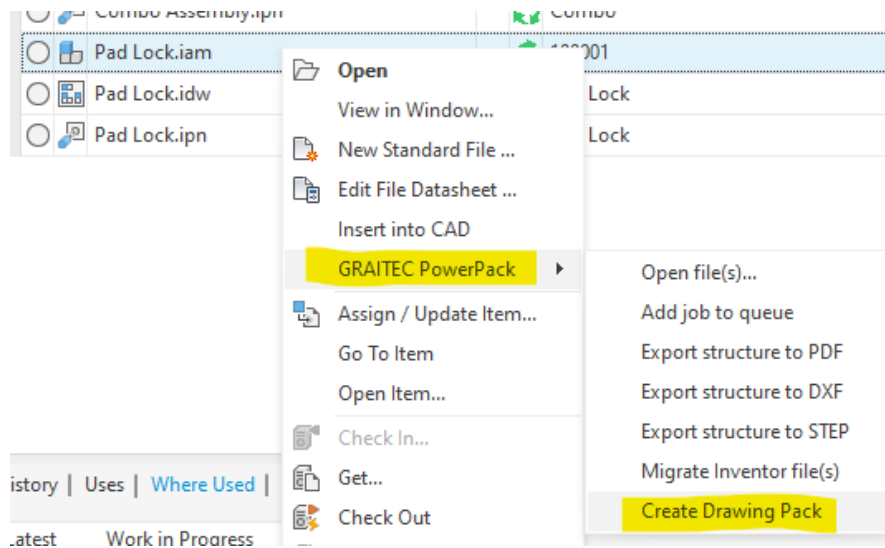


Job creation confirmation

The job processor exports all model file subcomponents of the selected assembly in the background into Step files.

2.2 Create Drawing Pack

Inside the context menu 'GRAITEC PowerPack' of files there is a new feature 'Create Drawing Pack':

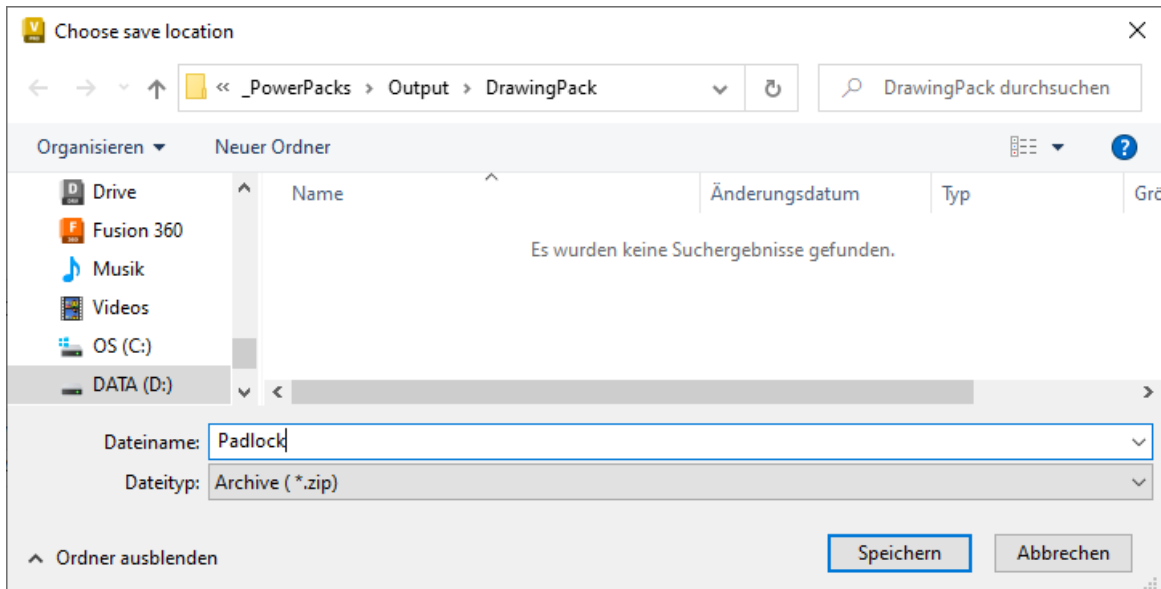


Create Drawing Pack

This function is designed for assemblies and collects all attachments of the selected file. With attachments, you can link vault files together.

An attachment of an Inventor model file might be an assembly instruction in PDF or Office document format, or some image file documents.

Calling the function asks for the zip file name of the Drawing Pack and collects all attachments of the subcomponents of the selected assembly.



DWG Pack Save location

The zip file with all attachments and an <Transmittal_report.pdf> as part of the zip file is created immediately.

The transmittal report contains information about the exported attachments (Revision, State, Vault Folder, Date):

File: ProductDescription.pdf

Revision = 2
State = Work in Progress
Vault Folder = \$/Designs/Samples/Padlock/Documentation
Version Date = 29.09.2022 09:59:40

File: MechanicalInstallation.pdf

Revision = 1
State = Released
Vault Folder = \$/Designs/Samples/Padlock/Documentation
Version Date = 29.09.2022 09:59:20

Transmittal Report

The content of the <Transmittal_report.pdf> can get changed by editing the template:
C:\ProgramData\Autodesk\ApplicationPlugins\Graitec.VPP.bundle\Contents\2023\Config\Drawing
PackTemplate.txt

File: <File Name>

Revision = <Revision>
State = <State>
Vault Folder = <Folder Path>
Version Date = <Date Version Created>

Transmittal report template

The text inside the angle brackets are placeholders for a Vault property value of the corresponding attachment file.

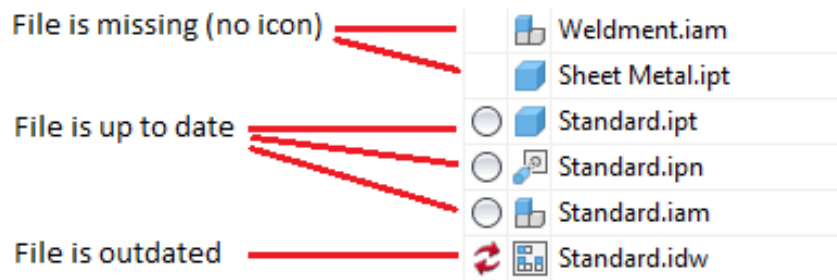
You can insert additional lines or change the existing lines. The content of the transmittal report template gets repeated for every attachment of the Drawing Pack.

2.3 Get Folders on Log On

This function checks if the files of the specified Vault folders are up to date in the user's workspace on logon.

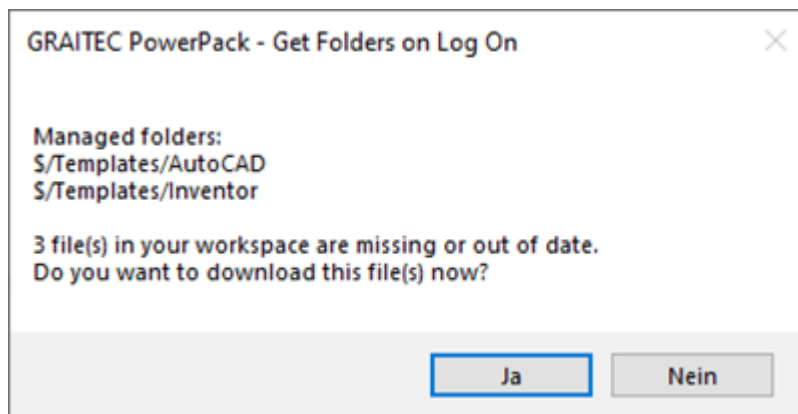
When configuration files like CAD templates, styles, etc. are managed inside the Vault these files must be up to date inside the user's workspace. This function helps to keep the local workspace files up to date.

The check of the local workspace files uses the Vault Status Icon of the Vault explorer:



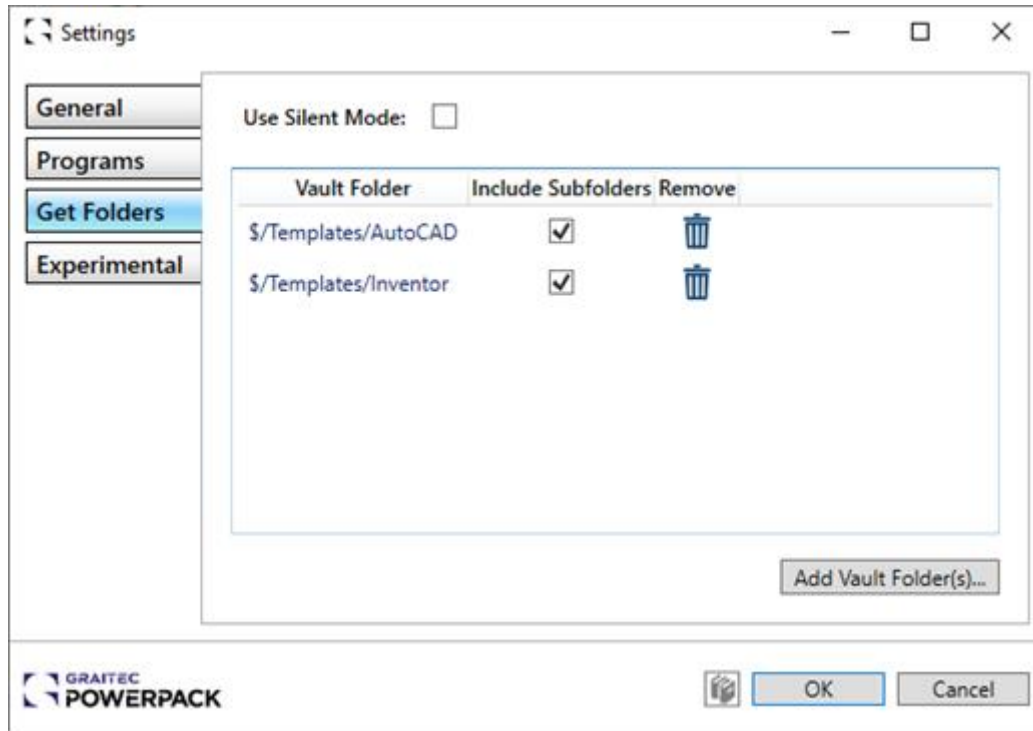
Vault files Status Icon

Missing or outdated files are downloaded silent or with user interaction:



Download confirmation message

The configuration is inside the Power Pack Settings dialog on the tab 'Get Folders':



Get Folders configuration

Use Silent Mode:

If this option is activated the local workspace files of the configured Vault folders are updated without user interaction when the user logs into the Vault.

If this option is deactivated a dialog is shown and the user is asked whether to download missing or outdated files or not (see above).

Add Vault Folder(s):

A dialog is shown, and you can select one or more Vault folders.

Include Subfolders:

The selected folder and all subfolders are checked.

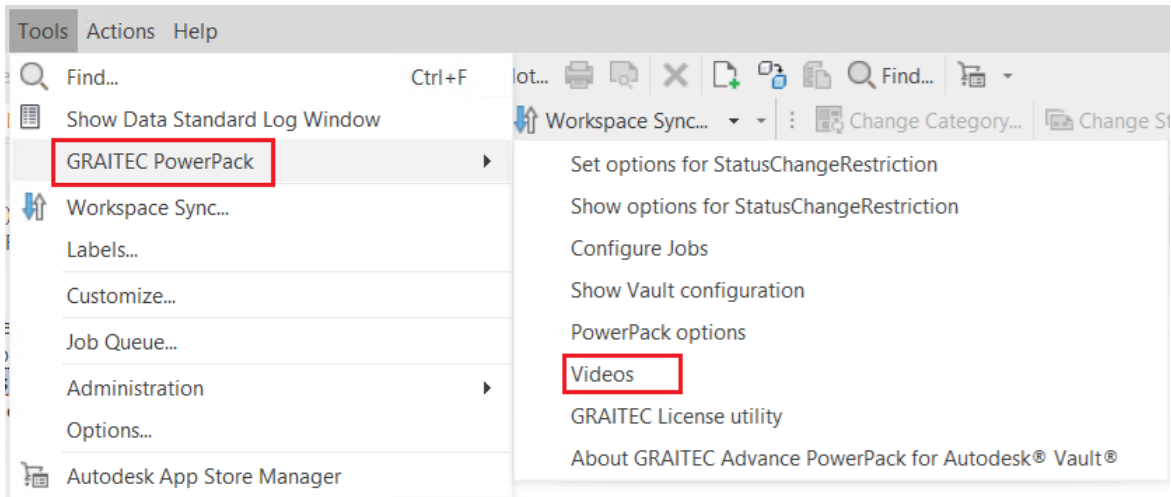
Remove:

Clicking the icon in this column removes the folder from the list.

2.4 Videos

Under the GRAITEC PowerPack menu, a new command has been added, VIDEOS.

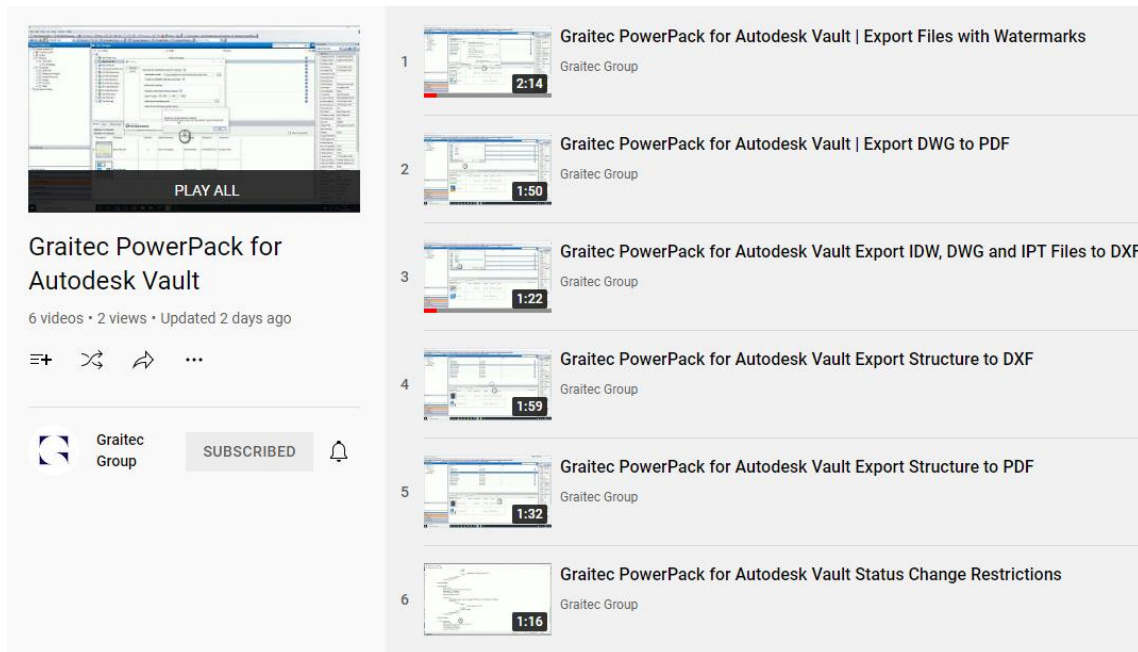
This helps to access useful videos about the functionalities available in the PowerPack for Vault, directly to the dedicated YouTube channel.



Videos command

By clicking the Videos command, the default browser of the computer will open the page of one of our YouTube channels directly to the playlist for PowerPack for Vault.

Currently, there are available 8 videos but check them and subscribe as we will upload more and more videos!



Videos playlist