

# What's New

in Graitec Opentree 2023.1



## Table of contents

<b>1. Welcome to Opentree 2023.1</b> .....	<b>3</b>
<b>2. New Features</b> .....	<b>4</b>
<b>2.1 Context menu sort order and Workflow sub menu</b> .....	<b>4</b>
<b>2.2 Revision History</b> .....	<b>5</b>
<b>2.3 EXIF data import</b> .....	<b>6</b>
<b>2.4 String replacement supported in Copy To tasks</b> .....	<b>7</b>
<b>2.5 Location data in linked text</b> .....	<b>8</b>
<b>2.6 Cancel all tasks for a document</b> .....	<b>9</b>
<b>2.7 Revit Add-in can produce PDF exports with editable fields</b> .....	<b>10</b>
<b>3. Other Updates</b> .....	<b>11</b>

## 1. Welcome to Opentree 2023.1

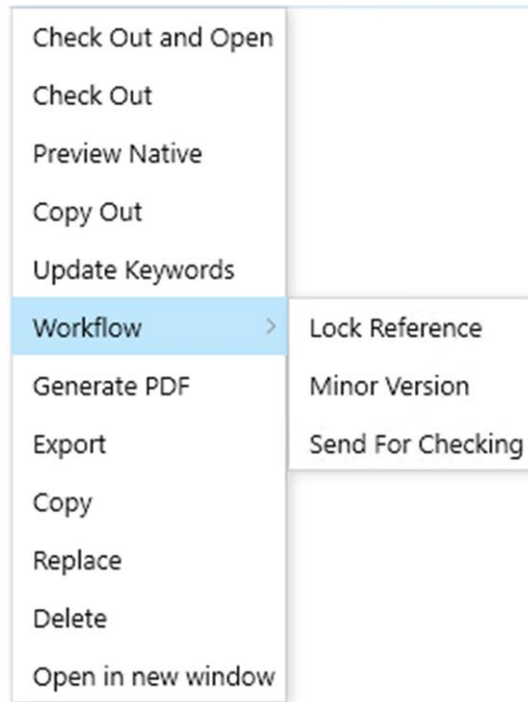
The 2023.1 version of **Opentree** has several new features to expand the ways we can interact and update documents, but it is primarily focused on internal changes to improve performance and stability. There is a lot happening behind the curtains between the client and service and that has been our focus for this release.



## 2. New Features

The following features have been added to Opentree 2023.1:

### 2.1 Context menu sort order and Workflow sub menu



#### Main features & Benefits:

- Organizes the document right-click menu significantly
- See which tasks are custom workflow tasks immediately
- Rigid task order to help users find system tasks more quickly

The right-click context menu has been reworked to have a fixed task order for both document and folder tasks. Previously tasks would appear in the order that they were added to stages, but now there is an internal sort order applied.

A Workflow sub-menu has also been added where all workflow tasks are shown. This makes it clearer which tasks will move the document through the workflow process. These workflow items are alphabetically ordered as well.

## 2.2 Revision History

No.	Date	Description	App
P01	11/08/2022	Initial Draft	DTN
P02	16/08/2022	Structure Redesign	JH
P03	14/09/2022	Additional Requirements	JS
P04		Rework Labels	

### Main features & Benefits:

- Dynamic document linked text updates detailing the revision progress
- Save time by having revision history field values update automatically

Opentree 2023.1 is now capable of updating and maintaining revision history blocks or fields within documents. This is an extensive feature for tracking document reviews and states over time.

## 2.3 EXIF data import

Exif Tags	
Date/Time Taken	2011:05:06 10:59:15
Camera Make	Panasonic
Camera Model	DMC-TZ10
Focal Length	4.1 mm
F-Number	f/5.6
Exposure Time	1/400 sec
GPS Latitude	53° 30' 53.48"
GPS Longitude	-2° 2' 29.84"
GPS Map Datum	WGS-84

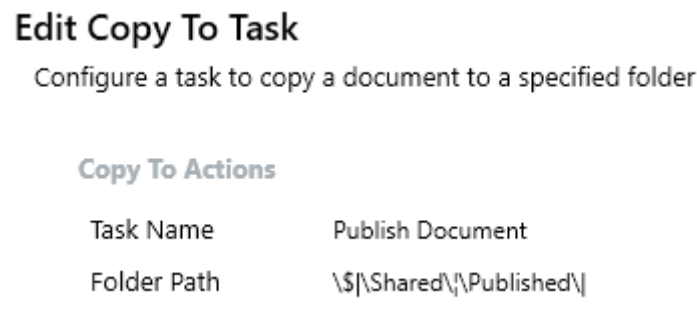
### Main features & Benefits:

- Automatically import photograph and image metadata into keywords
- Search and sort images using EXIF information

Opentree will now examine files for EXIF (Exchangeable image file format) information and fill out matching read-only keyword fields with this data.

This can be used to see what dates the picture was taken, the camera type, and the GPS coordinates

**2.4 String replacement supported in Copy To tasks**



**Main features & Benefits:**

- A powerful Copy To alternative
- Copy documents between similar folder structures using one task.

The Copy To task type now allows the use of string replacement codes. Using this a Copy To task will look at the document's current path and replace part of it. This allows for more dynamic copying as you can copy

The format is:

`\\$|TextToFind|TextReplacement|`

The example below shows two potential source folders and what the copy target path would be:

```
Source 1: \\Opentree\Graitec\Project 001\WIP\CAD & Design\Drawing Rendition\Xrefs
Source 2: \\Opentree\Graitec\Project 002\WIP\CAD & Design\Drawing Rendition\1001\10.1

Config: \\$|\WIP\CAD & Design\|\SHARED\|

Target 1: \\Opentree\Graitec\Project 001\SHARED\Drawing Rendition\Xrefs
Target 2: \\Opentree\Graitec\Project 002\SHARED\Drawing Rendition\1001\10.1
```

## 2.5 Location data in linked text

Linked Text	
Set Name	Set Name
Forename	Forename
Surname	Surname
Display Name	Display Name
Initials	Initials
Signature	Signature
Location	Location
Email	Email
Date	Date
Date Format	Date Format
<a href="#">+ Add Linked Text Set</a>	

### Main features & Benefits:

- Include sender or reviewer location data during review tasks


Tasks that update coordinator linked text fields can now add the coordinator's location information to the document.

Location is part of the user account data and can be edited in the user management settings.



## 2.6 Cancel all tasks for a document

Properties



Filename	001-OPE-XX-XX-DR-Z-0001.dwg
Reference	001-OPE-XX-XX-DR-Z-0001
Filetype	AutoCAD Drawing
Superseded	Not Superseded
Version	P01.02
	14/10/2022 17:09
Path	\\Opentree\Graitec\Project 001\WIP\CAD & Design\Drawing Rendition\001-OPE-XX-XX-DR-Z-0001.dwg
Intent	Drawing Rendition
Numbering System	ISO 19650 WIP Numbering
Workflow	ISO19650 Workflow
Stage	S0 - Work in Progress
Linked Text	Revit Sheets
Availability	Checked In
Created By	Johanx Holmbergx
	28/01/2022 16:09
Last Edited By	Johanx Holmbergx
	14/10/2022 17:09

Keywords

- ISO 19650 Naming Codes
 

Volume / System	<input type="text" value="No Volumes/Systems Applicable*"/>
Level / Location	<input type="text" value="No Level/Location Applicable*"/>
Role	<input type="text" value="General (non-disciplinary)*"/>
- Document Information
 

Description	<input type="text" value="Grid"/>
-------------	-----------------------------------

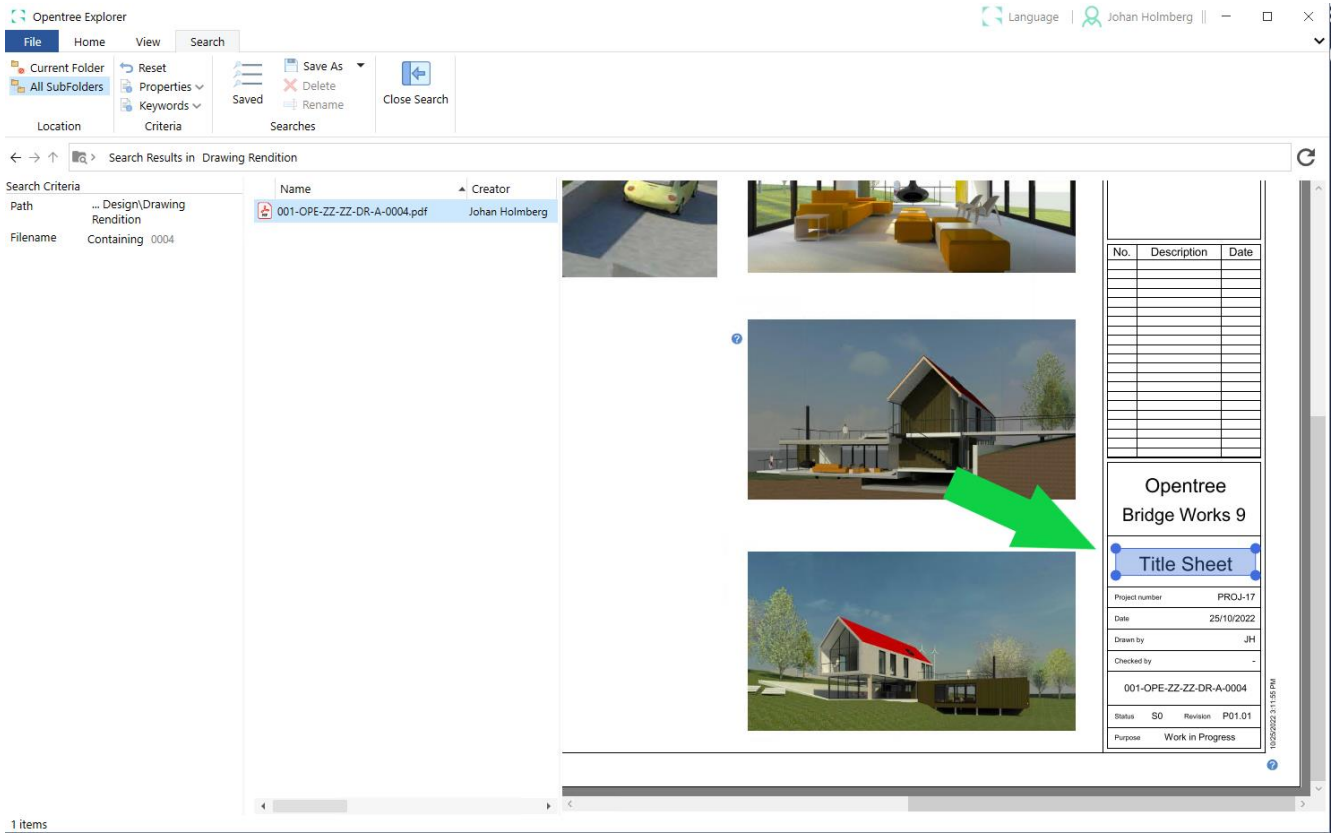
Cancel Document Tasks

### Main features & Benefits:

- Cancel all tasks for any given document, freeing it up for other purposes

Opentree will lock out most new tasks for a document when there is already a task running to prevent multiple access and write conflicts, however, sometimes a task could be left open by mistake. We have added a button in the Details Pane to allow people to cancel all tasks for a document. Please be aware that this is a hard cancellation and documents may get left in intermediate stages or states in certain situations.

## 2.7 Revit Add-in producing PDF exports with editable fields



### Main features & Benefits:

- Generate editable PDFs directly from Revit

It is now possible to set the Opentree Revit Add-in to export to PDF and get editable fields in the output. This will automatically apply to all linked text enabled fields if the project Export Format is set to PDF.

### 3. Other Updates

Opentree 2023 also delivers a couple of minor updates, as well as updates to how the software can be configured:

- An updated version of PDFTron is included which contains numerous fixes and improvements. MS Word linked text updates now work better with split cell tables and Excel exports are neater.
- Some document types are now compressed before transferring between the client and server, improving the upload and download speeds.
- The Replace task now automatically reuses the same intent if the replacement file is the same filetype.
- It is now possible to specify a 'None' or empty linked text group for documents in Administrator as well as in the client.
- Various bug fixes.