

**Advance Concrete 2010
SP2
What's new**

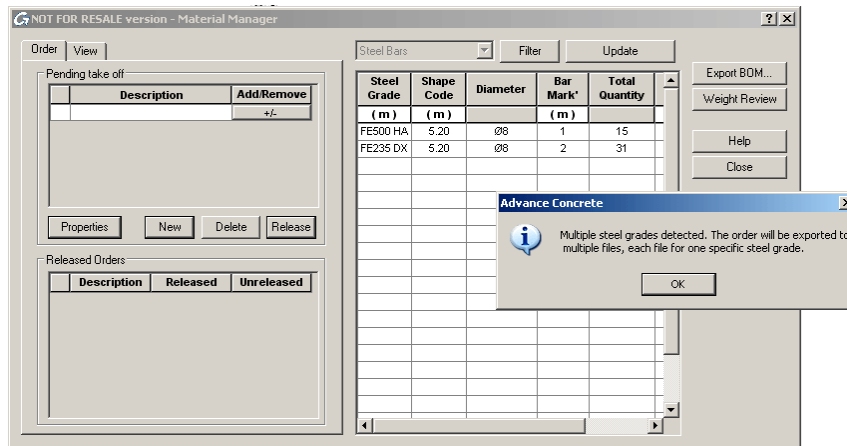


www.graitec.com

TECHNOLOGY

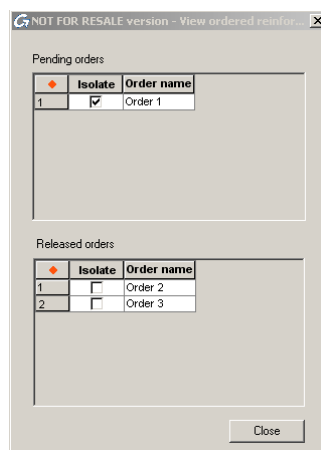
Material Quantities Manager: NC file for each steel grade

→ For orders containing several steel grades, one NC file can be generated for each grade. For each steel grade it is possible to customize the settings in the order properties (e.g. aSa – different control codes for each file).



Material Quantities Manager: New tool for viewing the orders

→ A new tool allows viewing order content directly on drawings. The elements of the selected orders are isolated on the drawing.

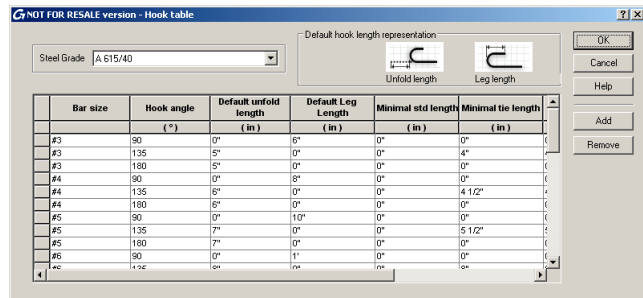
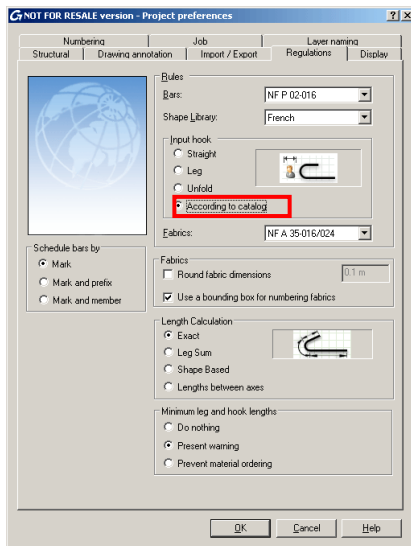


Measurement of 90° hooks

→ A new option in the Project preferences allows the measurement of hooks according to the hooks table.

Especially for the North American market, a new behavior is implemented in the hook catalog: the hooks table contains a new field where the user can enter the segment length for a certain bar size, grade and angle. Some records are defined as “unfold”; others are defined as segment, according to the hook angle.

For example, hooks that are exactly 90° can be measured as a segment while hooks over 90° are measured by unfolding the bar and taking the distance from the end of the unfolded bar.



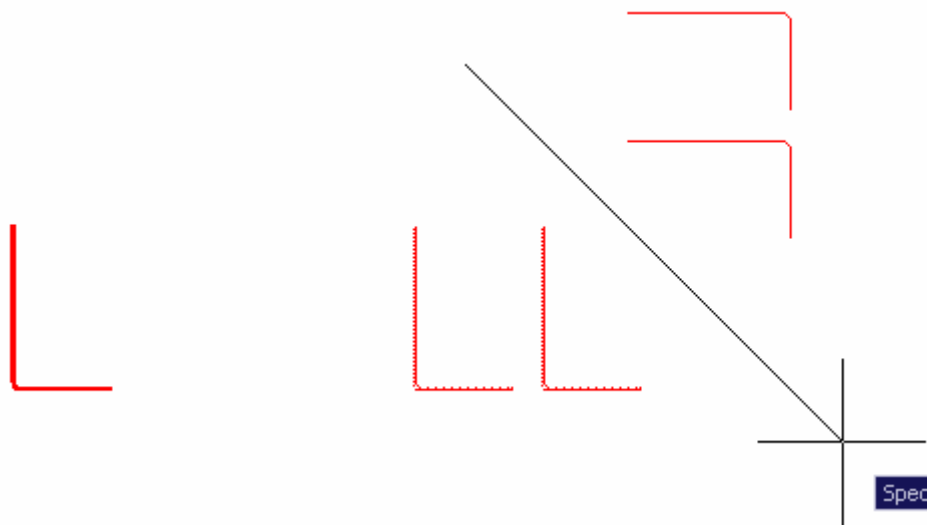
Reinforcement

Linear distribution representation improvement

→ Small improvement for the representation of the linear distribution: the bar end symbols are displayed automatically, according to the bar hook angle.

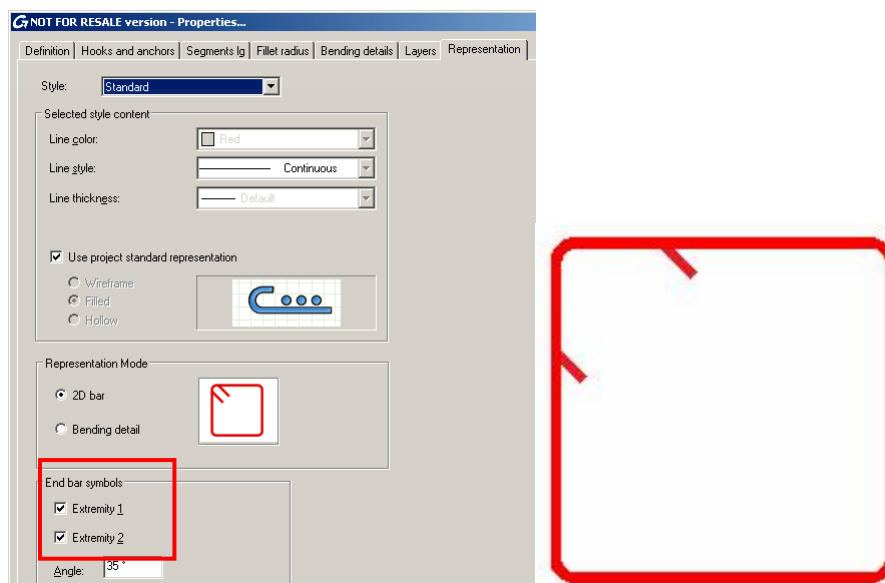
One-by-one distribution improvement

→ Correction to mirror of one-by-one distributions with bar exact view:



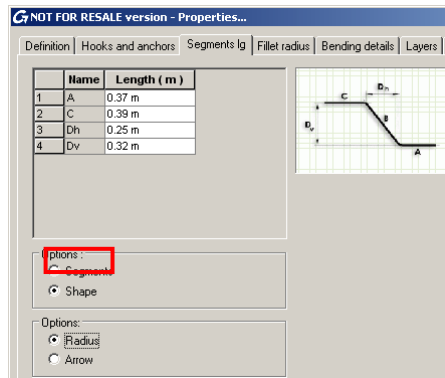
Rectangular frames – 90° hook representation

→ New options for the end bar symbols are available to make the drawing easier to read. The rectangular frames with 90° hooks are better represented.



Bar shape segment lengths

→ A new option to modify the bar shape parameters is available in the bar properties dialog box.

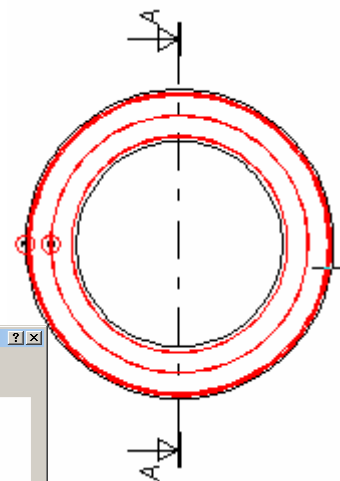
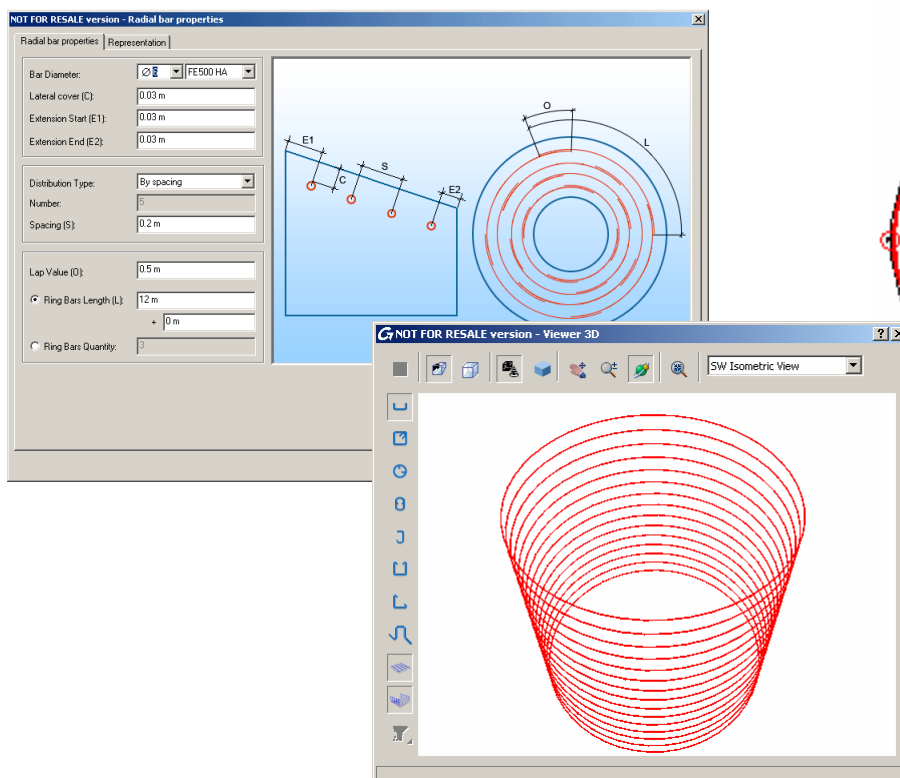


3D viewer

→ The reinforcement 3D viewer has been improved. The reinforcement cages can contain any number of bars.

Dynamic reinforcement - Radial bars

→ A new tool allows the creation of radial bars and their distribution for reinforcing circular elements.



Multi-user

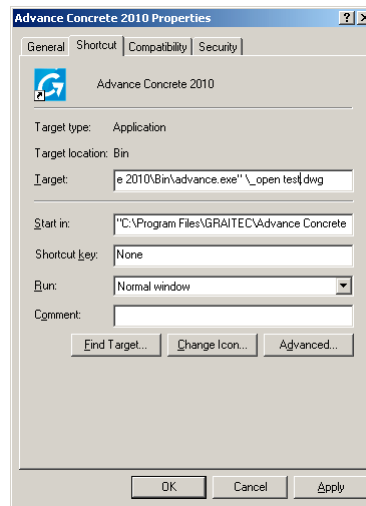
New multi-user based on MS SQL Server

→ Starting with Service Pack 2, Advance Concrete uses an SQL Server for the database and user management.

Others

→ Better defaults for Germany.

→ The command line parameters from Advance.exe can be forwarded to AutoCAD.



License

→ A new option in the License Utility allows requesting an upgrade of the 2010 computer locked maintenance license to a mobile license.

