

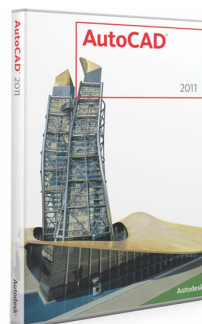
# Advance Concrete 2010 SP3 What's new



This document describes the improvements and fixes that are included in SP3

**Advance Concrete 2010 SP3 is AutoCAD 2011 compliant**

**GRAITEC  
ADVANCE**



[www.graitec.com](http://www.graitec.com)

## Reinforcement

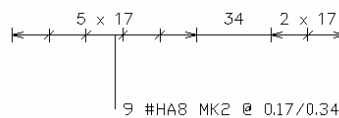
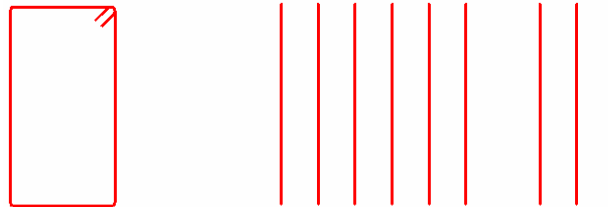
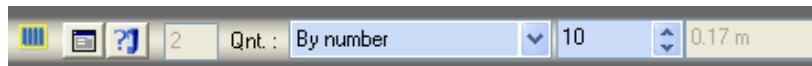
### Bending detail: angle dimension on hooks of bars

→ Now angles are also displayed for hooks on bending details when the “Angle” option is activated.



### Distribution with “By number” option: delete some of the bars from the distribution

→ It is possible to delete bars in a distribution using the **By number** option. The bar symbol is accordingly updated.

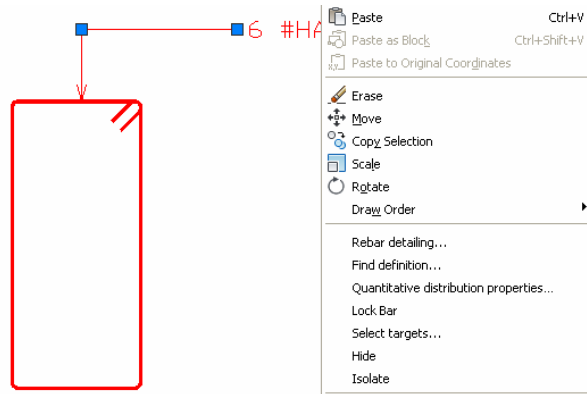


### Bending detail scale management

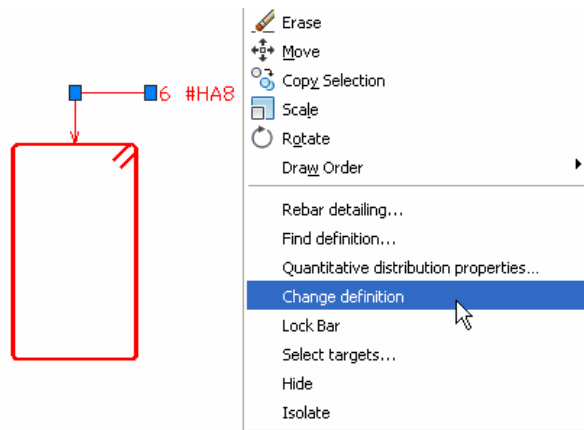
→ The scale setting in the Pilot works well on the bending details. We no longer need to scale by a factor to have the same size as the definition bar when current scale is different from 1/50.

**Change bar definition also for Quantitative repartition**

→ Old contextual menu for quantitative distribution was:



→ It is now possible to change definition from contextual menu for quantitative distribution:



**Bar with a radius / Change length**

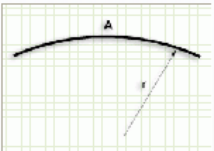
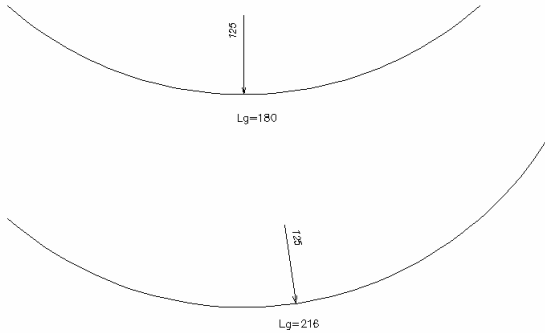
→ When the length of the bar with a radius is changed the length is modified the radius is not.

◆	Name	Length ( cm )	Displ ( cm )
1	A	216 cm	
2	r	124 cm	

Options :

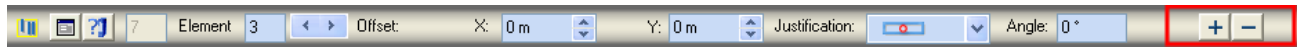
Segments

Shape

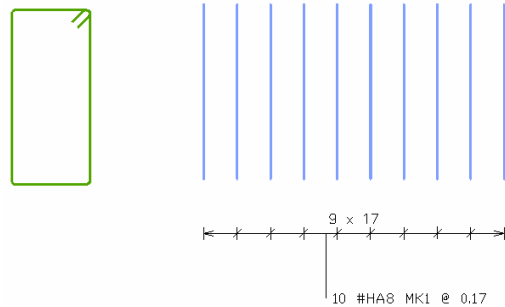
**One by one distribution: add/delete command in the Smartbar**

→ When editing a one by one distribution it is possible to add or delete bars using specific icons in the *Smartbar*. The process is the same as for free distributions.

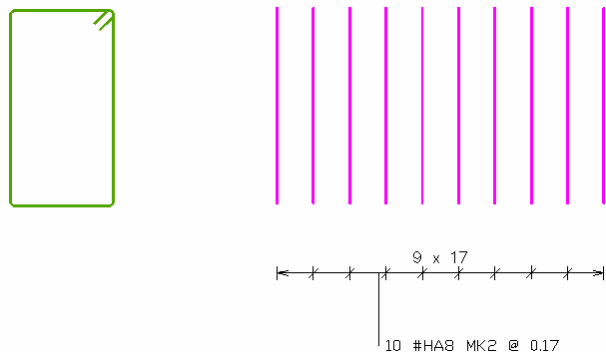
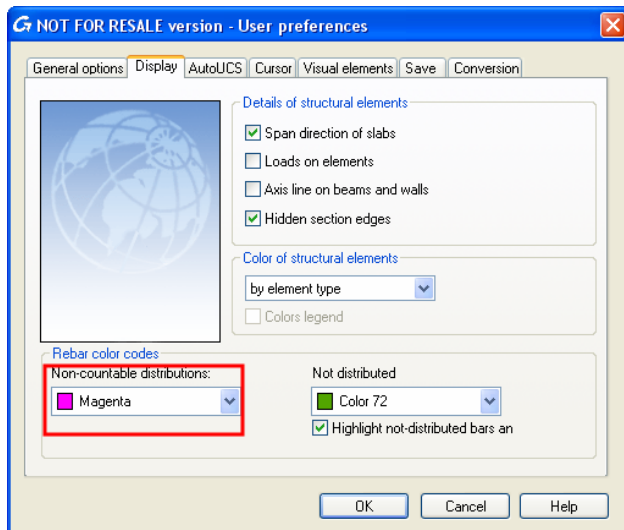


**Possibility to change the color of uncounted bars**

→ The old version color for uncounted bars was hard coded (color 161):



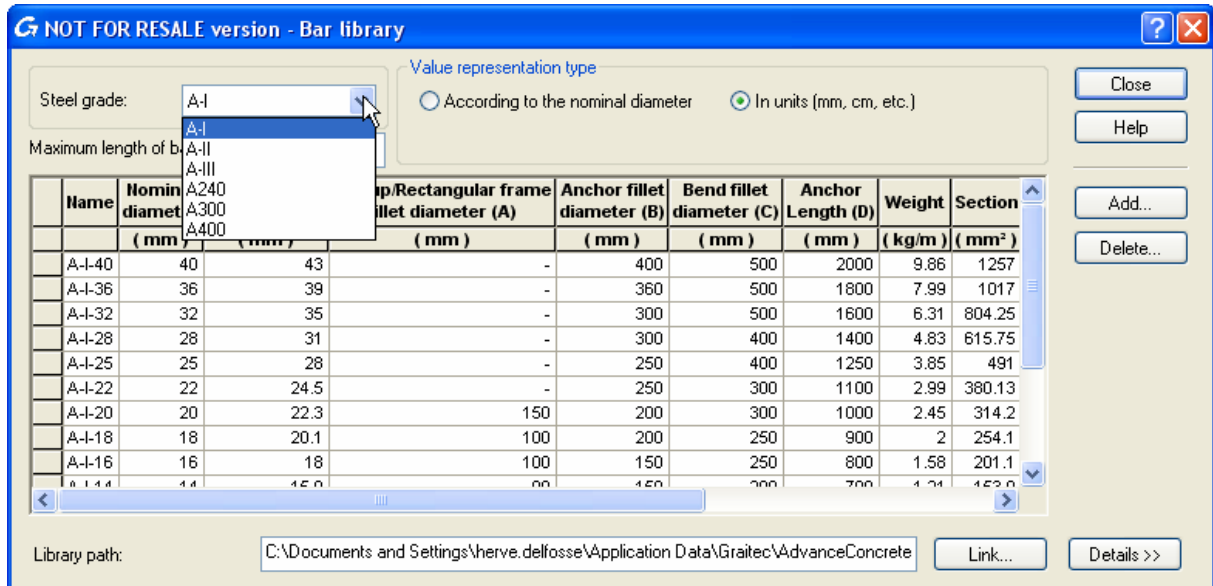
→ It is now possible to choose color for uncounted distribution from “User preferences” window:



## FIXED ISSUES

### Localization

→ Russian rebar standards, list templates and other localizations are present in SP3.  
 Bar library:



→ Cyrillic characters are available for section labels.

→ When the attributes used in labels or schedules evaluate to a text that contains Cyrillic characters, these are correctly displayed.

### Model

→ In a project including walls bound to a ramp, sometimes after opening the file some of the walls are no longer bound to the ramp. This issue has been solved.

→ While a beam is straight, its connection to a roof works fine. But when the user adds some radius to the beam, especially a very large radius, the connection to the roof does not work properly. Only part of connected beam is shown In this case. This issue has been solved.

→ An alternative numbering sequence for grids has been introduced. A registry value can be setup to replace the grid axes numbering sequence (e.g. A, B, C...) with a custom sequence (e.g. A, Б, В, Г, Д, Е, Ж ...)

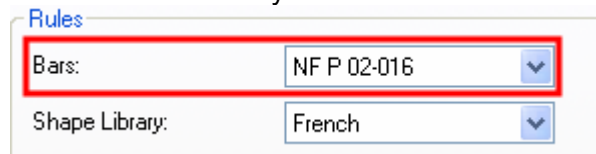
→ Sometimes there are some unexpected diagonal lines on the calculated top view when it includes a slab bound to a roof. This issue has been solved.

### Drawings

- Sometimes the position of the texts on associative dimensions is not correct. This issue has been solved.
- Using Vista64 some ramps are not displayed in calculated view. This issue has been solved.
- Sometime it was not possible to calculate Advance Steel isometric views or elevation views. This issue has been solved.
- When updating a section the leaders from bubbles sometimes move to the wrong position. This issue has been solved.
- No AS objects are evaluated in the AC drawings. This issue has been solved.
- Sometimes the grid is not visible in section views. This issue has been solved.

### Reinforcement

- The software may hang when saving a file after adding a cut distribution. This issue has been solved.
- A new attribute is available for lists and symbols: "*CurrentRebarStandard*".



- In exported DWF file symbols are shown in cut of meshes even if these symbols are hidden in original drawing. This issue has been solved.
- Now new reinforcement section can be created outside the main object, that is to say through neighboring members.
- Corrected the offset control behavior for one by one distributions that are showing an exact definition representation.
- File opening may be very slow. This was caused by distribution migrations. This issue has been solved.
- Now repartition dimension respects color of dimension style when color for central line is set "ByBlock" or "ByLayer".
- The bar mark is *size-prefix-number* when US startup settings are used. When all the legs of a polygonal bar are deleted, except for the last one, the bar mark became 'number'. Now the format is respected.
- Now when a bar is modified, Advance tries first to match the existing shape code and only if that doesn't work, then moves forward and tries to find a matching shape code.
- With US settings there was a crash when choosing null hook 2 for ASA shape 03. This issue has been solved.
- With US settings when a bar is created from shape 31 the code turns to 03. Then the list cannot read the parameters (e.g. A, B, C, D ...). This issue has been solved.

## **Others**

→ Sometimes Advance Steel cannot be started from Advance Concrete. This message appears in the command line: "Procedure not found". This issue has been solved.

→ Some computers using the x64 version crashed when adding labels to the structural member images in calculated views. This issue has been solved.